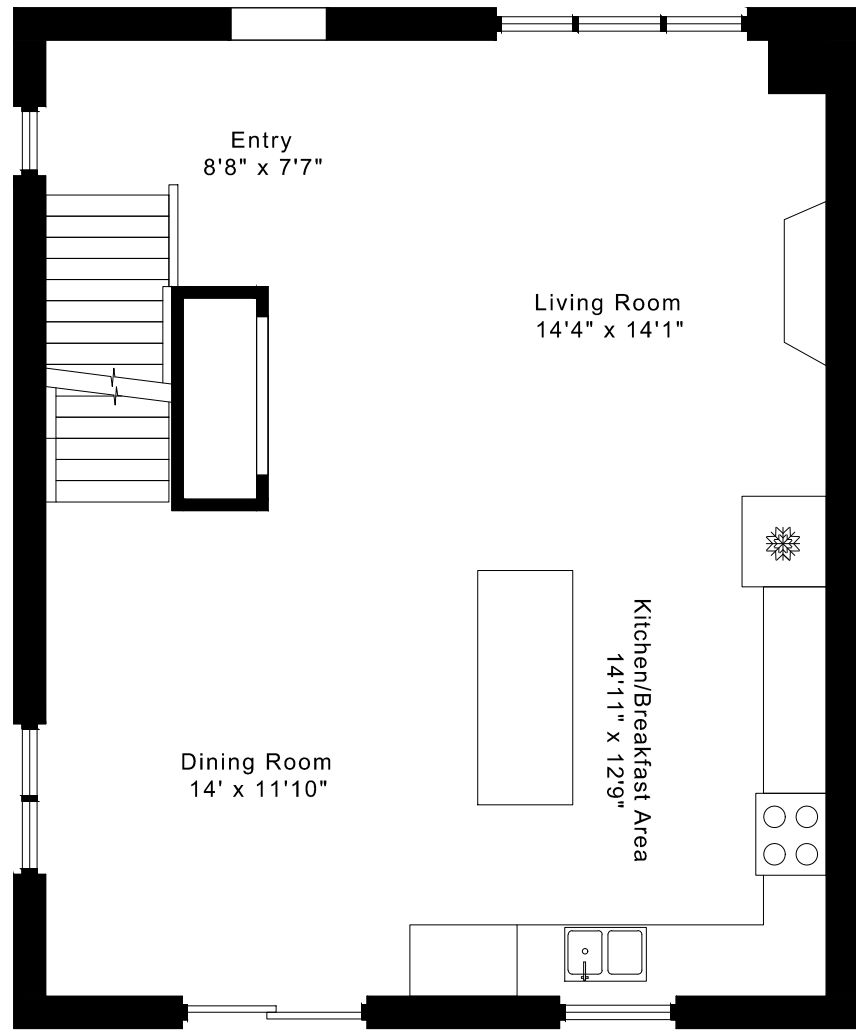
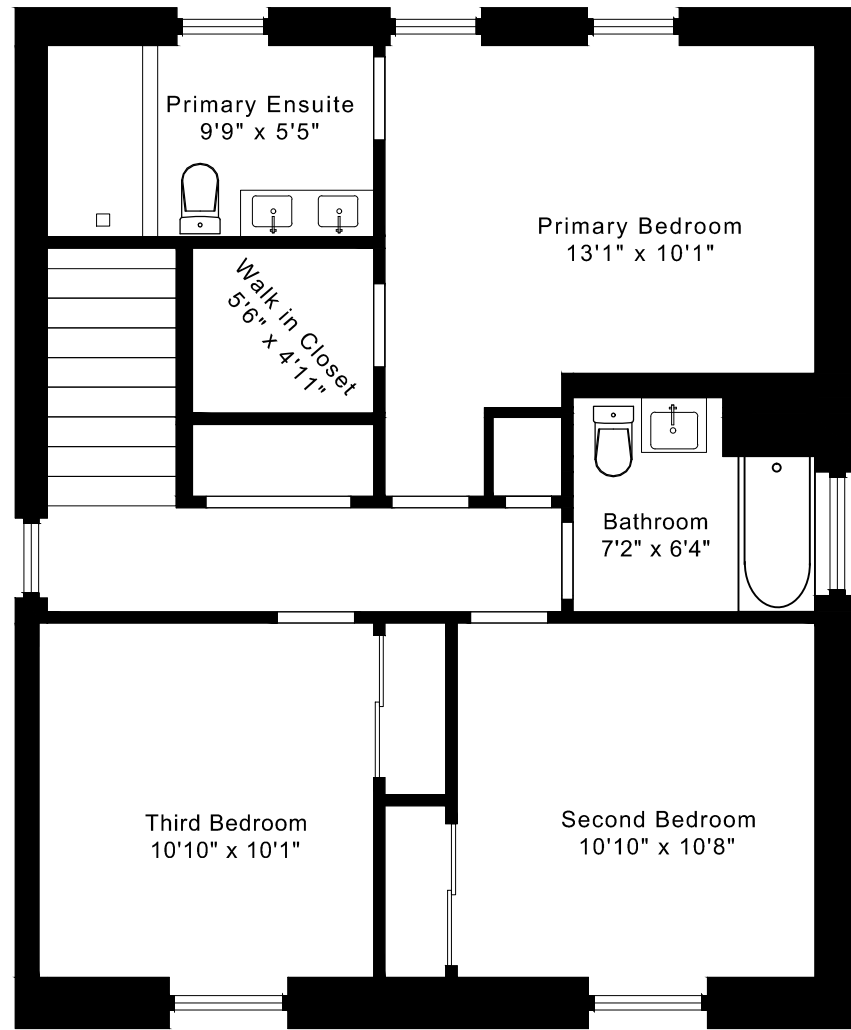


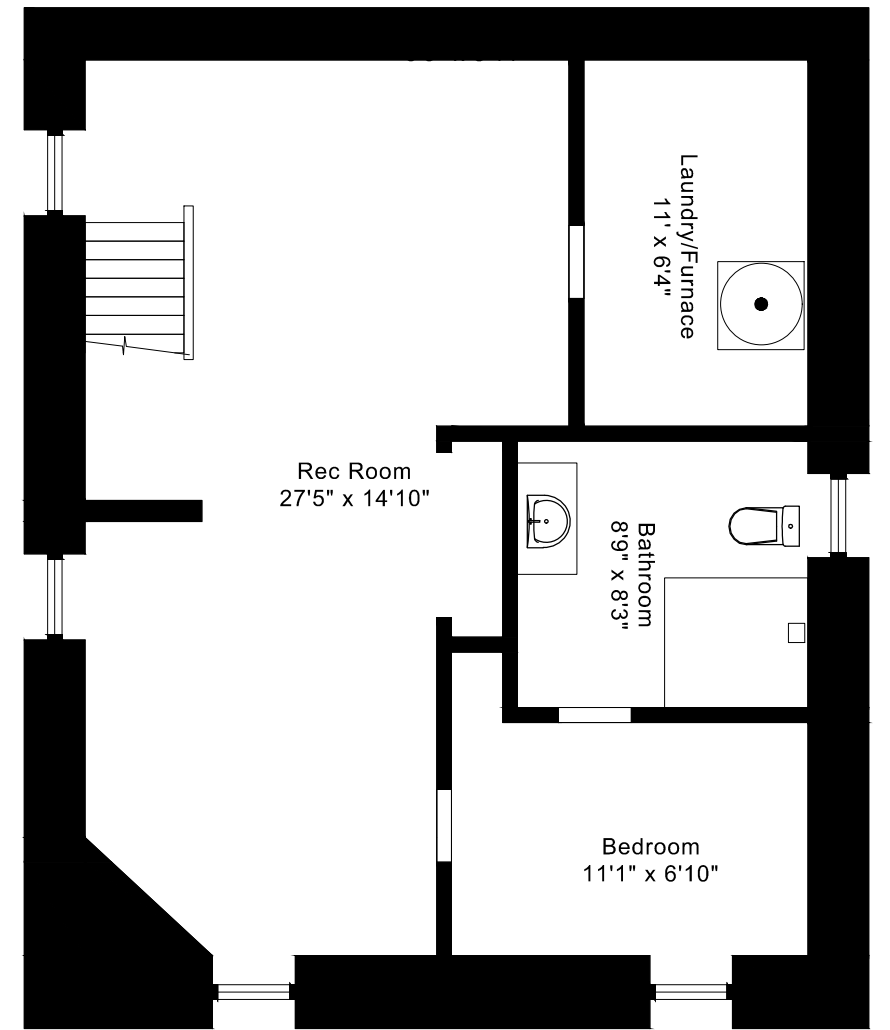
1043 SHAW DRIVE FLOOR PLANS



MAIN FLOOR
810 SQUARE FEET



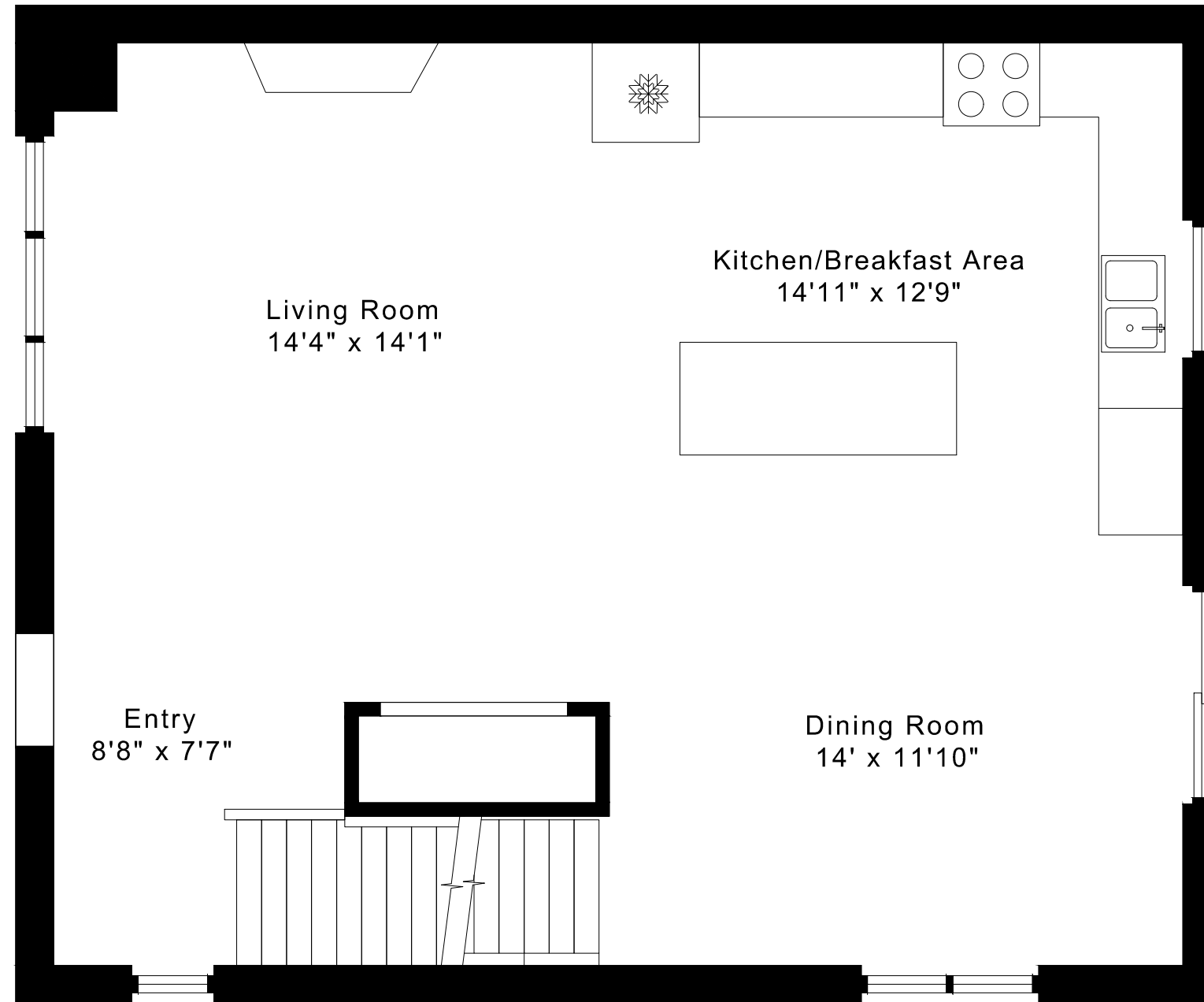
SECOND FLOOR
810 SQUARE FEET



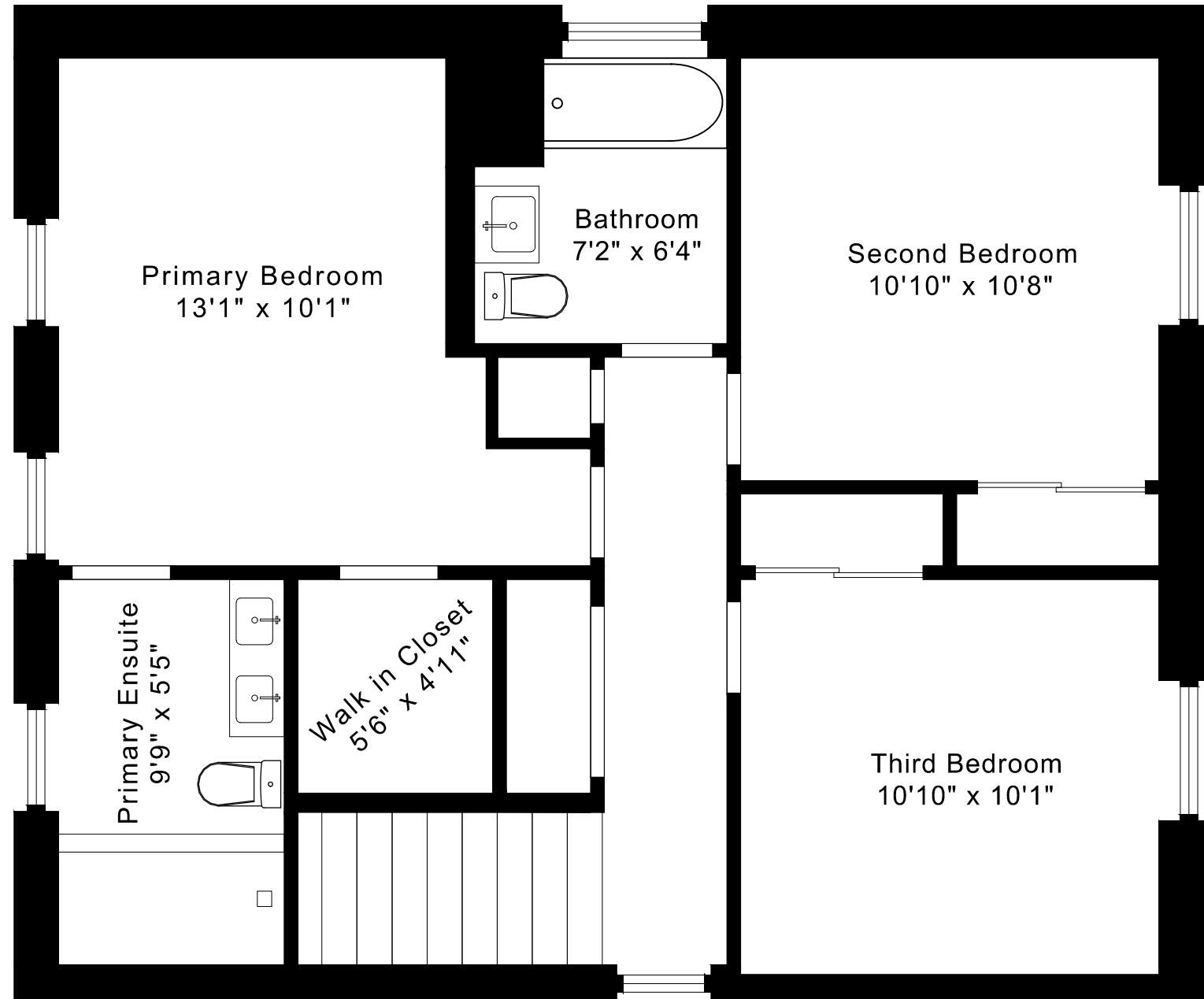
LOWER FLOOR
810 SQUARE FEET

1043 SHAW DRIVE FLOOR PLANS

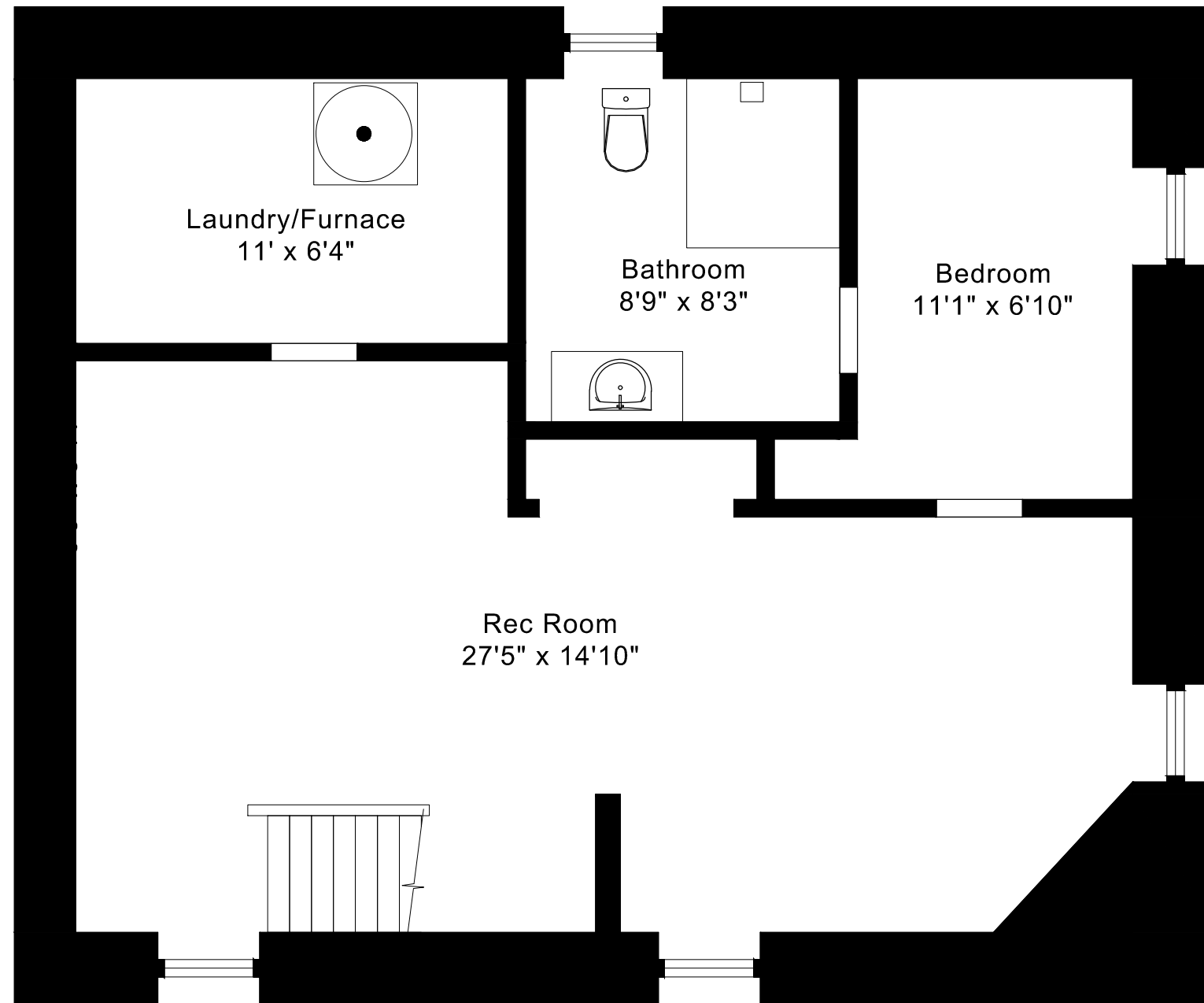
MAIN FLOOR 810 SQUARE FEET



1043 SHAW DRIVE
FLOOR PLANS
SECOND FLOOR 810 SQUARE FEET



1043 SHAW DRIVE
FLOOR PLANS
LOWER FLOOR 810 SQUARE FEET



1043 SHAW DRIVE ROOM MEASUREMENTS

Floor	Room	Imperial						Metric [m]		
		Length		Width		Height		Length	Width	Height
		Feet	Inches	Feet	Inches	Feet	Inches			
Second	Primary Bedroom	13	1	10	1	7	9	3,99	3,07	2,36
	Primary Ensuite	9	9	5	5	7	9	2,97	1,65	2,36
	Walk in Closet	5	6	4	11	7	9	1,68	1,50	2,36
	Second Bedroom	10	10	10	8	7	9	3,30	3,25	2,36
	Third Bedroom	10	10	10	1	7	9	3,30	3,07	2,36
	Bathroom	7	2	6	4	7	9	2,18	1,93	2,36
Main	Entry	8	8	7	7	8	1	2,64	2,31	2,46
	Living Room	14	4	14	1	8	1	4,37	4,29	2,46
	Dining Room	14	6	11	2	8	1	4,42	3,40	2,46
	Kitchen/Breakfast Area	14	11	12	9	8	1	4,55	3,89	2,46
Lower	Rec Room	27	5	14	10	7	8	8,36	4,52	2,34
	Bedroom	11	1	6	10	7	8	3,38	2,08	2,34
	Bathroom	8	9	8	3	7	8	2,67	2,51	2,34
	Laundry/Furnace	11	0	6	4	7	8	3,35	1,93	2,34

CAPTURED ON: 15 MAY 2026
 DIMENSIONS ARE APPROXIMATE AND SHOULD BE CONSIDERED
 ILLUSTRATIVE ONLY.

1620 sq ft + 810 sq ft
 BELOW GRADE

The following is a disclaimer regarding the approximate nature of dimensions and floor areas listed in this document:

Disclaimer:

The dimensions and floor areas listed in this document are provided as an estimate only and are intended to be used for illustration purposes only. These measurements are not necessarily meant to be a perfect representation of the actual space.

Notes regarding measurement methods and accuracy:

The utilization of laser measurement technology during the 3D model capturing process at the location provides an accurate representation of floor plans, with a typical margin of error of 3-5%. For the most accurate and official measurement data, it is advised to consult official documents such as MPAC records, builder's pre-construction plans, or data from certified measurement companies.

Exterior wall thickness is included in the calculation of the overall square footage and is considered as a component of the footprint. The wall thickness measurement is obtained onsite whenever possible, or estimated in the event where obtaining onsite measurements is not possible, such as in the case of condominium buildings where wall thickness may vary throughout the building.