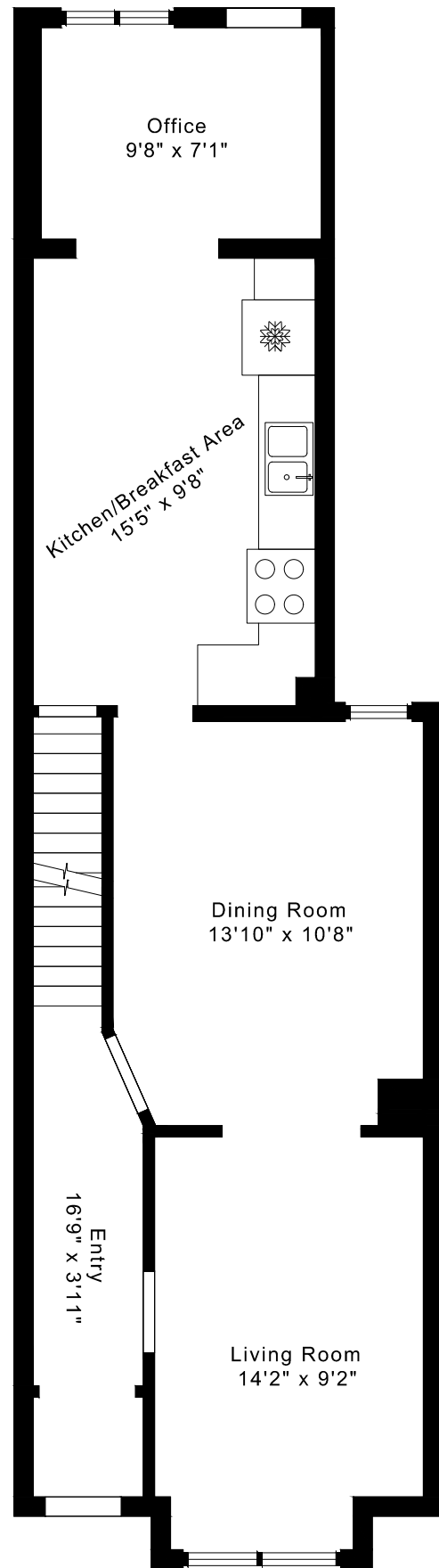
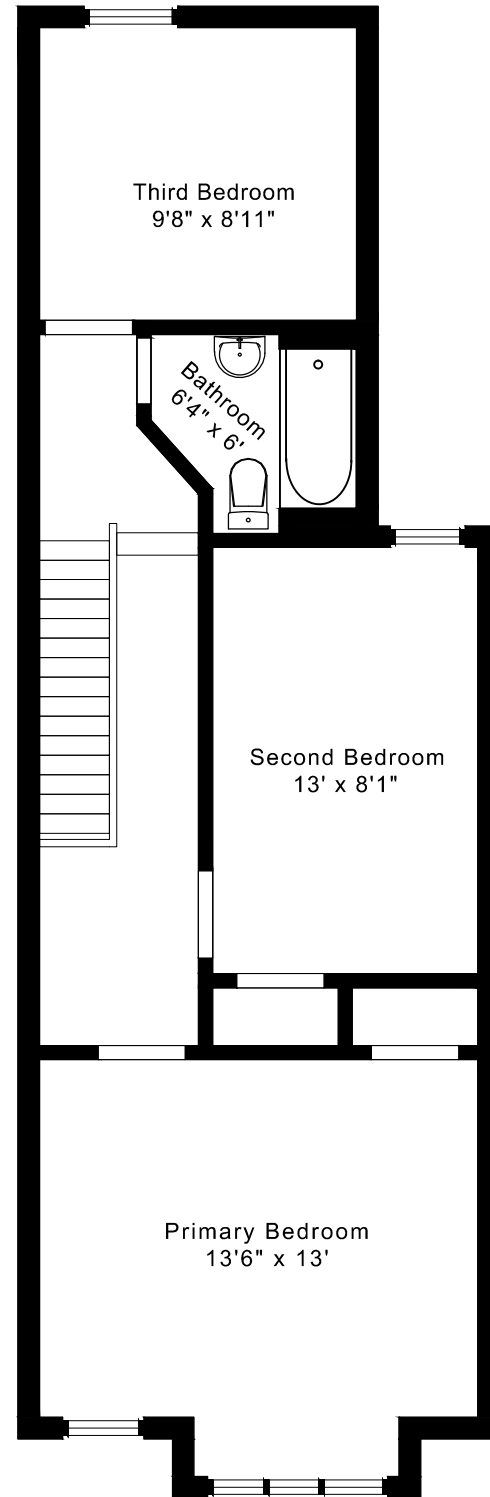


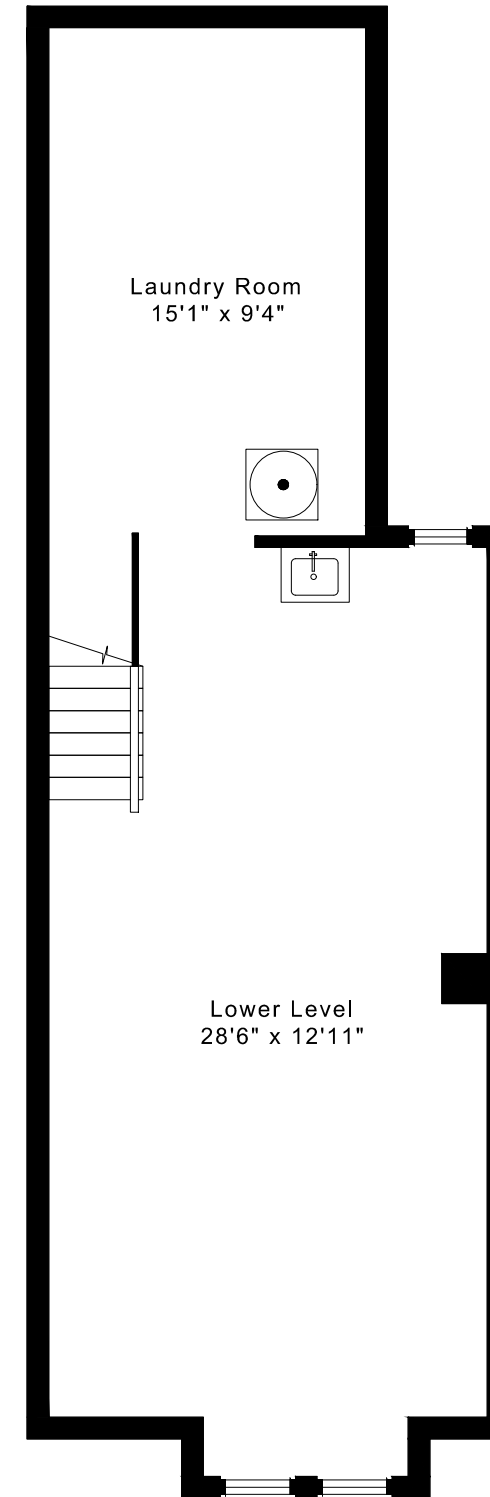
163 BEACONSFIELD AVENUE FLOOR PLANS



MAIN FLOOR
690 SQUARE FEET



SECOND FLOOR
605 SQUARE FEET

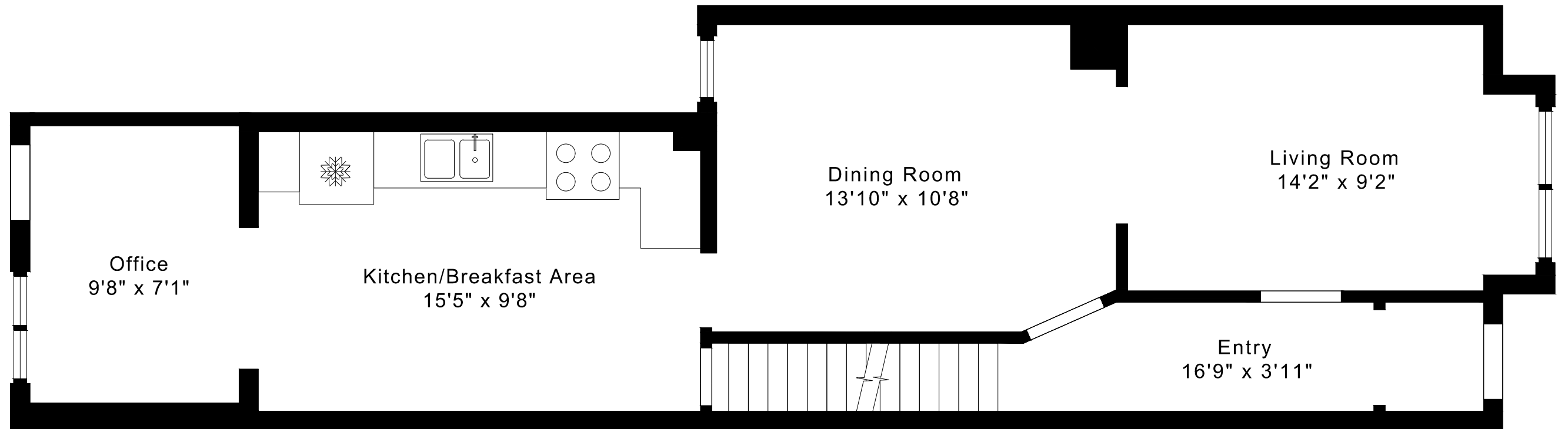


LOWER FLOOR
605 SQUARE FEET

1295 sq ft + 605 sq ft
BELOW GRADE

163 BEACONSFIELD AVENUE FLOOR PLANS

MAIN FLOOR 690 SQUARE FEET



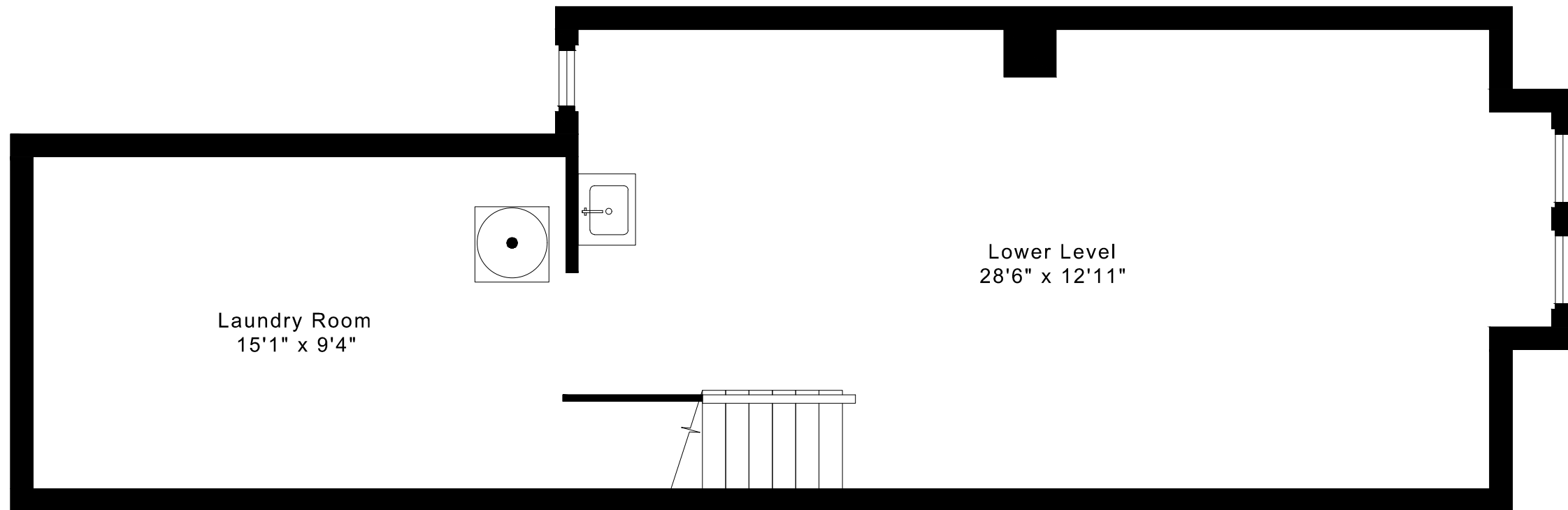
163 BEACONSFIELD AVENUE FLOOR PLANS

SECOND FLOOR 605 SQUARE FEET



163 BEACONSFIELD AVENUE FLOOR PLANS

LOWER FLOOR 605 SQUARE FEET



163 BEACONSFIELD AVENUE ROOM MEASUREMENTS

Floor	Room	Imperial						Metric [m]		
		Length		Width		Height		Length	Width	Height
		Feet	Inches	Feet	Inches	Feet	Inches			
Second	Primary Bedroom	13	6	13	0	8	9	4,11	3,96	2,67
	Second Bedroom	13	0	8	1	8	9	3,96	2,46	2,67
	Third Bedroom	9	8	8	11	8	4	2,95	2,72	2,54
	Bathroom	6	4	6	0	8	4	1,93	1,83	2,54
Main	Entry	16	9	3	11	9	10	5,11	1,19	3,00
	Living Room	14	2	9	2	9	10	4,32	2,79	3,00
	Dining Room	13	10	10	8	9	10	4,22	3,25	3,00
	Kitchen/Breakfast Area	15	5	9	8	8	2	4,70	2,95	2,49
	Office	9	8	7	1	7	9	2,95	2,16	2,36
Lower	Lower Level	28	6	12	11	7	7	8,69	3,94	2,31
	Laundry Room	15	1	9	4	7	7	4,60	2,84	2,31

The following is a disclaimer regarding the approximate nature of dimensions and floor areas listed in this document:

Disclaimer:

The dimensions and floor areas listed in this document are provided as an estimate only and are intended to be used for illustration purposes only. These measurements are not necessarily meant to be a perfect representation of the actual space.

Notes regarding measurement methods and accuracy:

The utilization of laser measurement technology during the 3D model capturing process at the location provides an accurate representation of floor plans, with a typical margin of error of 3-5%. For the most accurate and official measurement data, it is advised to consult official documents such as MPAC records, builder's pre-construction plans, or data from certified measurement companies.

Exterior wall thickness is included in the calculation of the overall square footage and is considered as a component of the footprint. The wall thickness measurement is obtained onsite whenever possible, or estimated in the event where obtaining onsite measurements is not possible, such as in the case of condominium buildings where wall thickness may vary throughout the building.