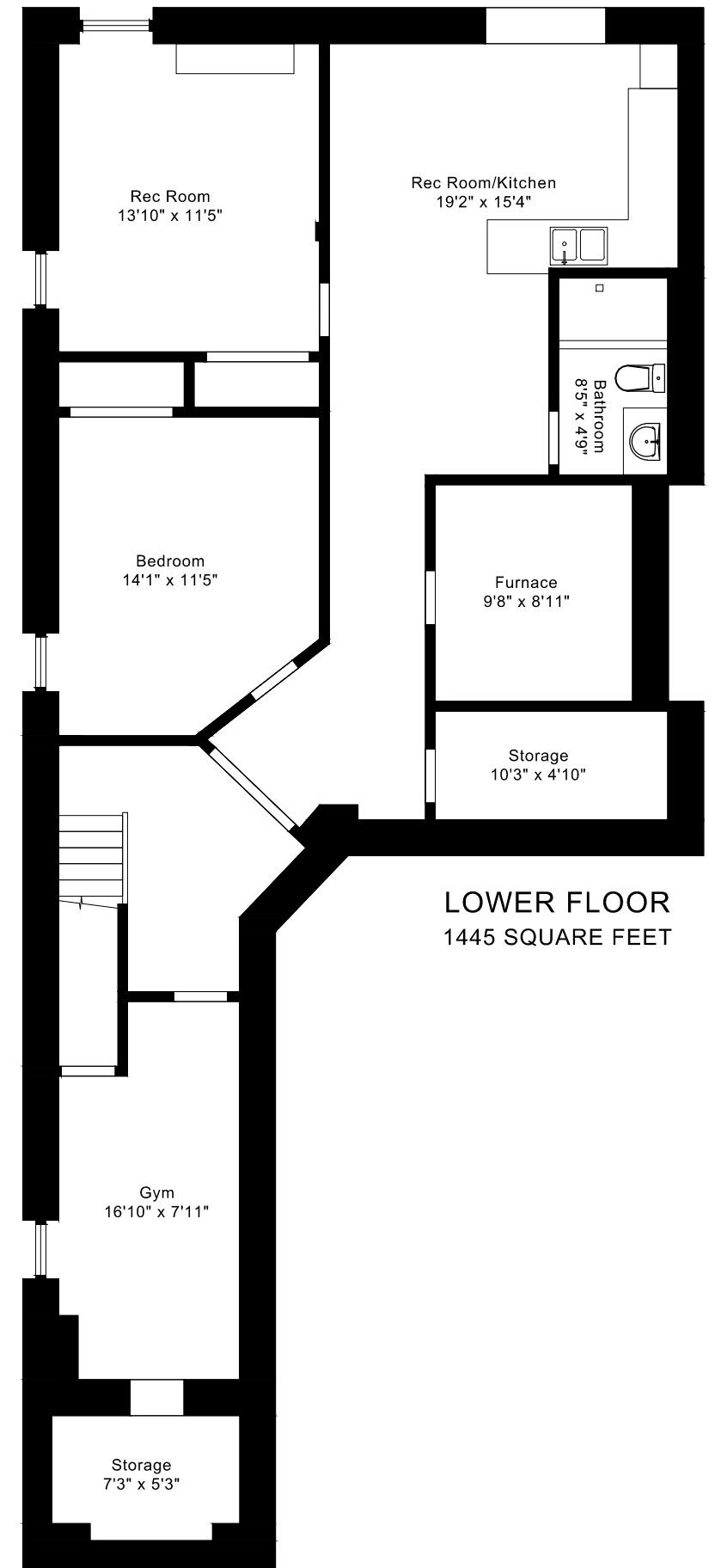
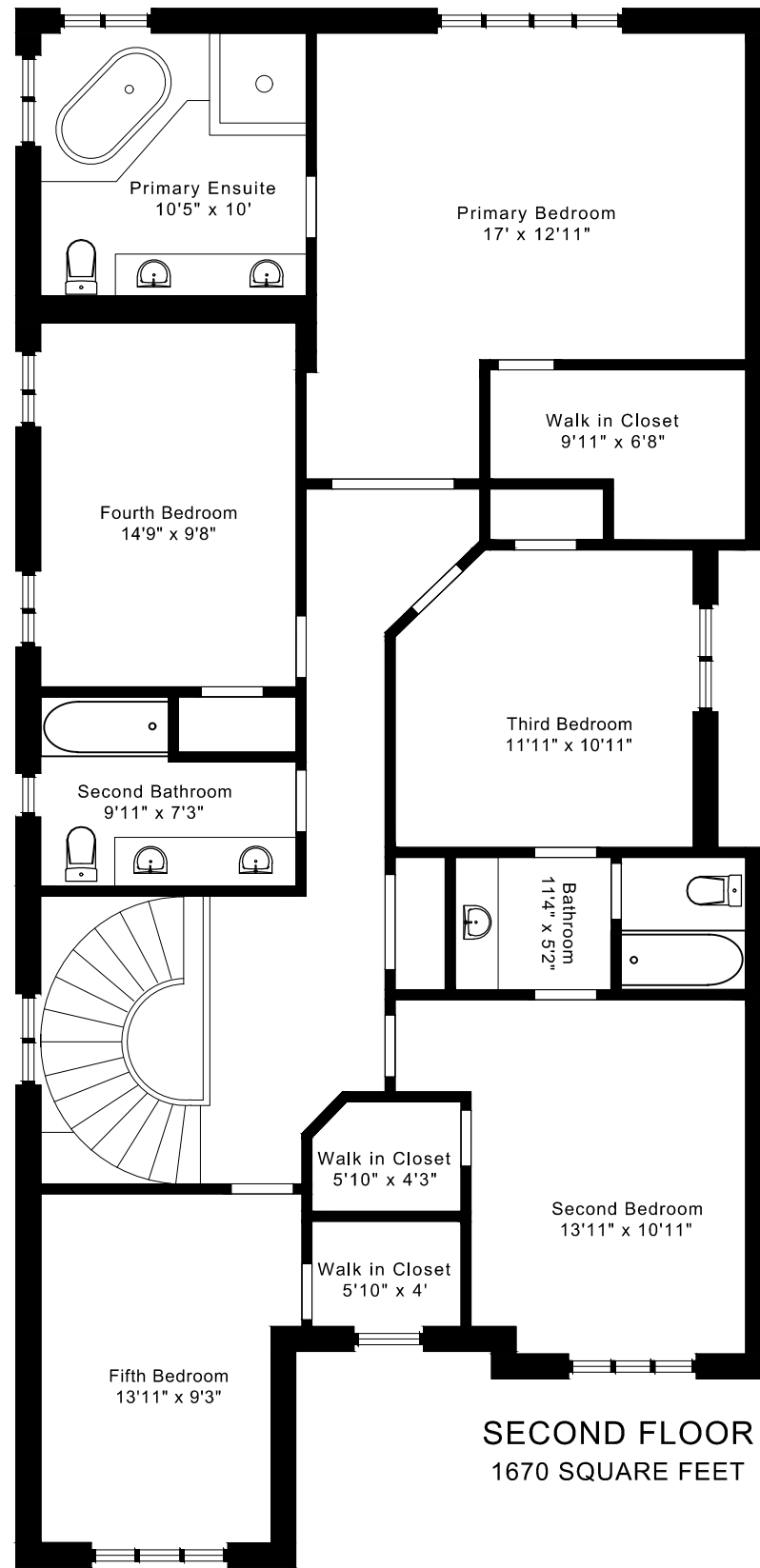
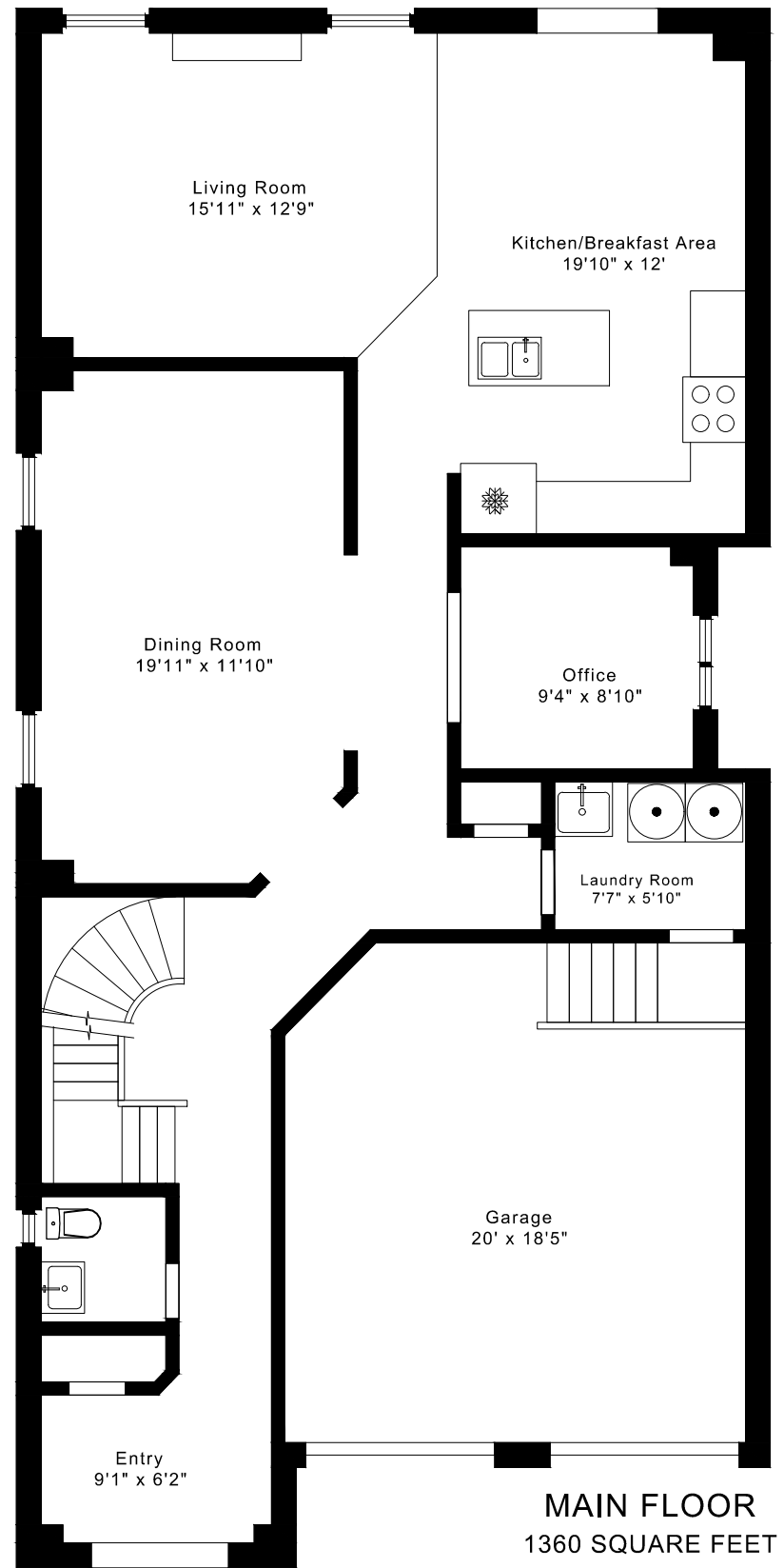


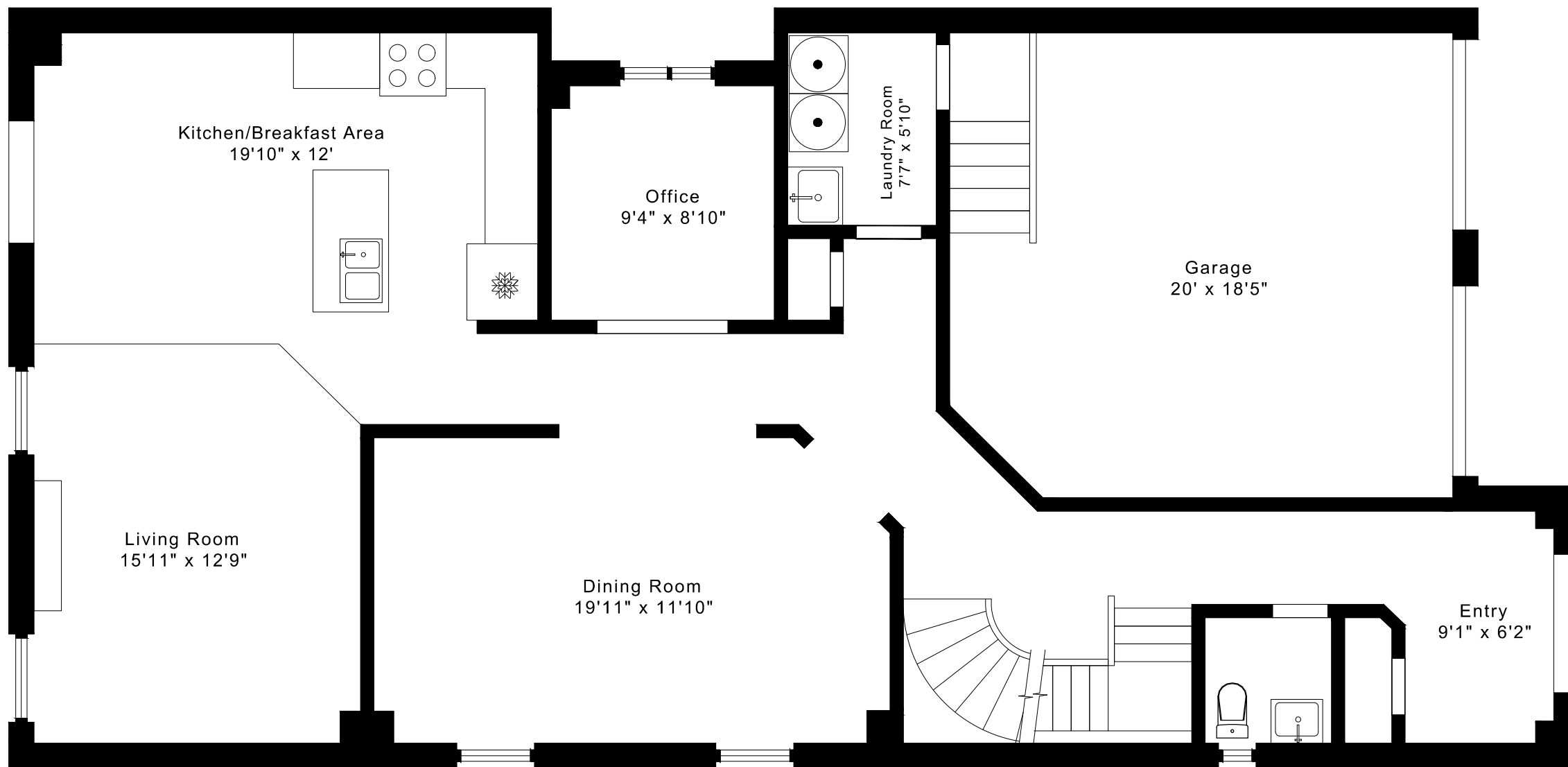
26 SILVER POND DRIVE FLOOR PLANS



3030 sq ft + 1445 sq ft
BELOW GRADE

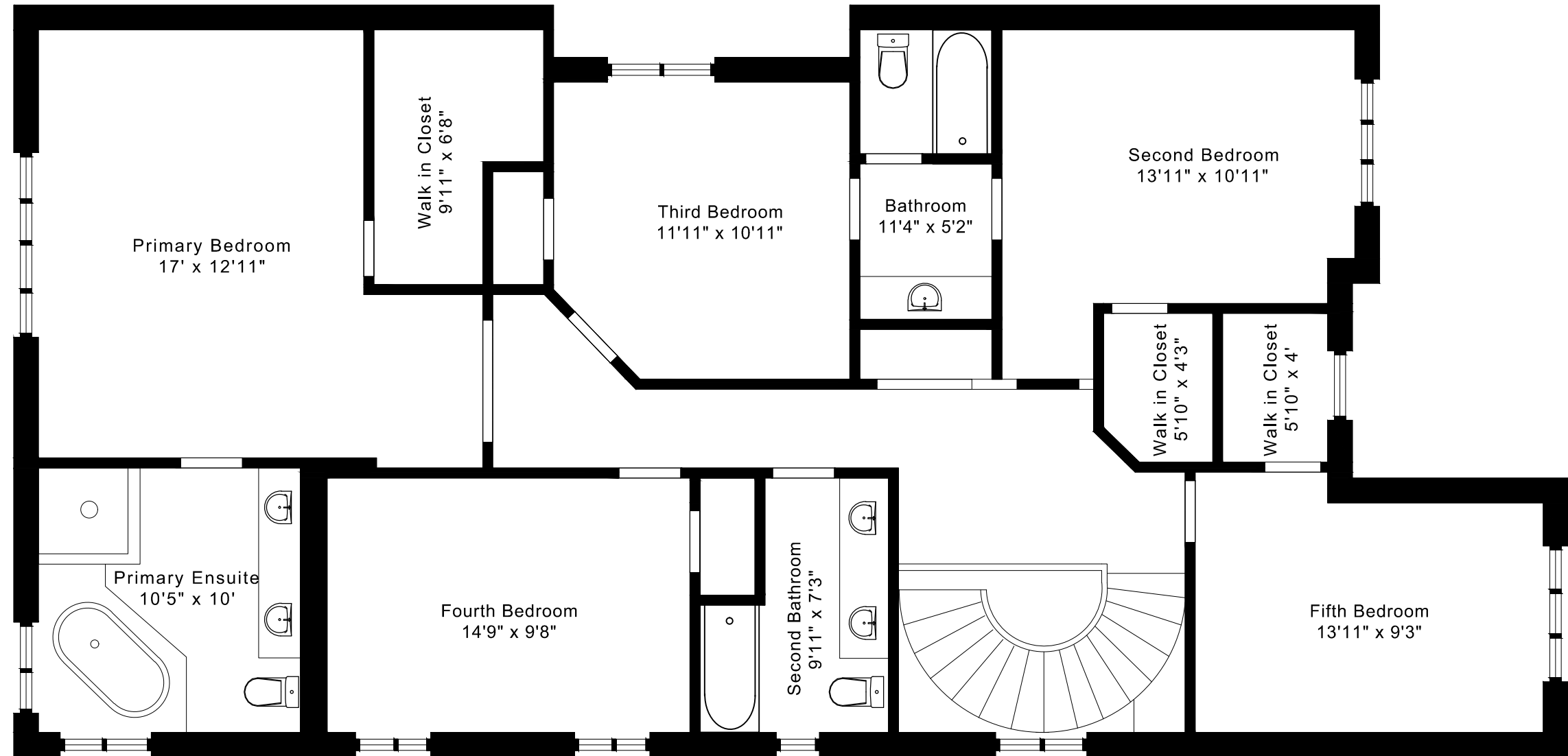
26 SILVER POND DRIVE FLOOR PLANS

MAIN FLOOR 1360 SQUARE FEET



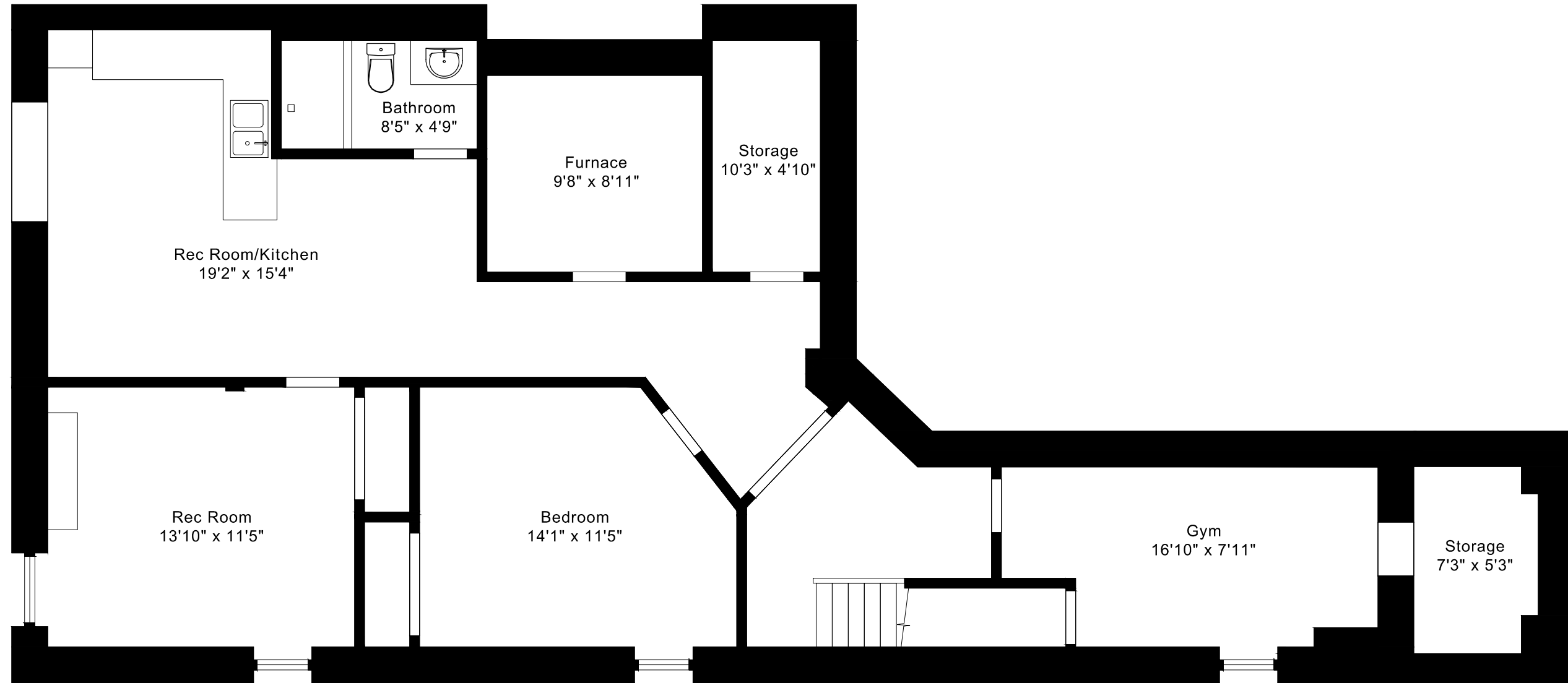
26 SILVER POND DRIVE FLOOR PLANS

SECOND FLOOR 1670 SQUARE FEET



26 SILVER POND DRIVE FLOOR PLANS

LOWER FLOOR 1445 SQUARE FEET



26 SILVER POND DRIVE ROOM MEASUREMENTS

Floor	Room	Imperial						Metric [m]		
		Length		Width		Height		Length	Width	Height
		Feet	Inches	Feet	Inches	Feet	Inches			
Second	Primary Bedroom	17	0	12	11	9	0	5,18	3,94	2,74
	Primary Ensuite	10	5	10	0	9	0	3,18	3,05	2,74
	Walk in Closet	9	11	6	8	9	0	3,02	2,03	2,74
	Second Bedroom	13	11	10	11	9	0	4,24	3,33	2,74
	Walk in Closet	5	10	4	3	9	0	1,78	1,30	2,74
	Third Bedroom	11	11	10	11	9	0	3,63	3,33	2,74
	Bathroom	11	4	5	2	9	0	3,45	1,57	2,74
	Fourth Bedroom	14	9	9	8	9	0	4,50	2,95	2,74
	Fifth Bedroom	13	11	9	3	9	0	4,24	2,82	2,74
	Walk in Closet	5	10	4	0	9	0	1,78	1,22	2,74
	Second Bathroom	9	11	7	3	9	0	3,02	2,21	2,74
Main	Entry	9	1	6	2	8	11	2,77	1,88	2,72
	Living Room	15	11	12	9	8	11	4,85	3,89	2,72
	Dining Room	19	11	11	10	8	11	6,07	3,61	2,72
	Kitchen/Breakfast Area	19	10	12	0	8	0	6,05	3,66	2,44
	Office	9	4	8	10	8	4	2,84	2,69	2,54
	Laundry Room	7	7	5	10	8	8	2,31	1,78	2,64
	Garage	20	0	18	5	11	11	6,10	5,61	3,63
Lower	Rec Room	13	10	11	5	9	0	4,22	3,48	2,74
	Rec Room/Kitchen	19	2	15	4	9	0	5,84	4,67	2,74
	Gym	16	10	7	11	9	0	5,13	2,41	2,74
	Bedroom	14	1	11	5	9	0	4,29	3,48	2,74
	Bathroom	8	5	4	9	9	0	2,57	1,45	2,74
	Storage	10	3	4	10	7	7	3,12	1,47	2,31
	Storage	7	3	5	3	7	7	2,21	1,60	2,31
	Furnace	9	8	8	11	9	0	2,95	2,72	2,74

The following is a disclaimer regarding the approximate nature of dimensions and floor areas listed in this document:

Disclaimer:

The dimensions and floor areas listed in this document are provided as an estimate only and are intended to be used for illustration purposes only. These measurements are not necessarily meant to be a perfect representation of the actual space.

Notes regarding measurement methods and accuracy:

The utilization of laser measurement technology during the 3D model capturing process at the location provides an accurate representation of floor plans, with a typical margin of error of 3-5%. For the most accurate and official measurement data, it is advised to consult official documents such as MPAC records, builder's pre-construction plans, or data from certified measurement companies.

Exterior wall thickness is included in the calculation of the overall square footage and is considered as a component of the footprint. The wall thickness measurement is obtained onsite whenever possible, or estimated in the event where obtaining onsite measurements is not possible, such as in the case of condominium buildings where wall thickness may vary throughout the building.