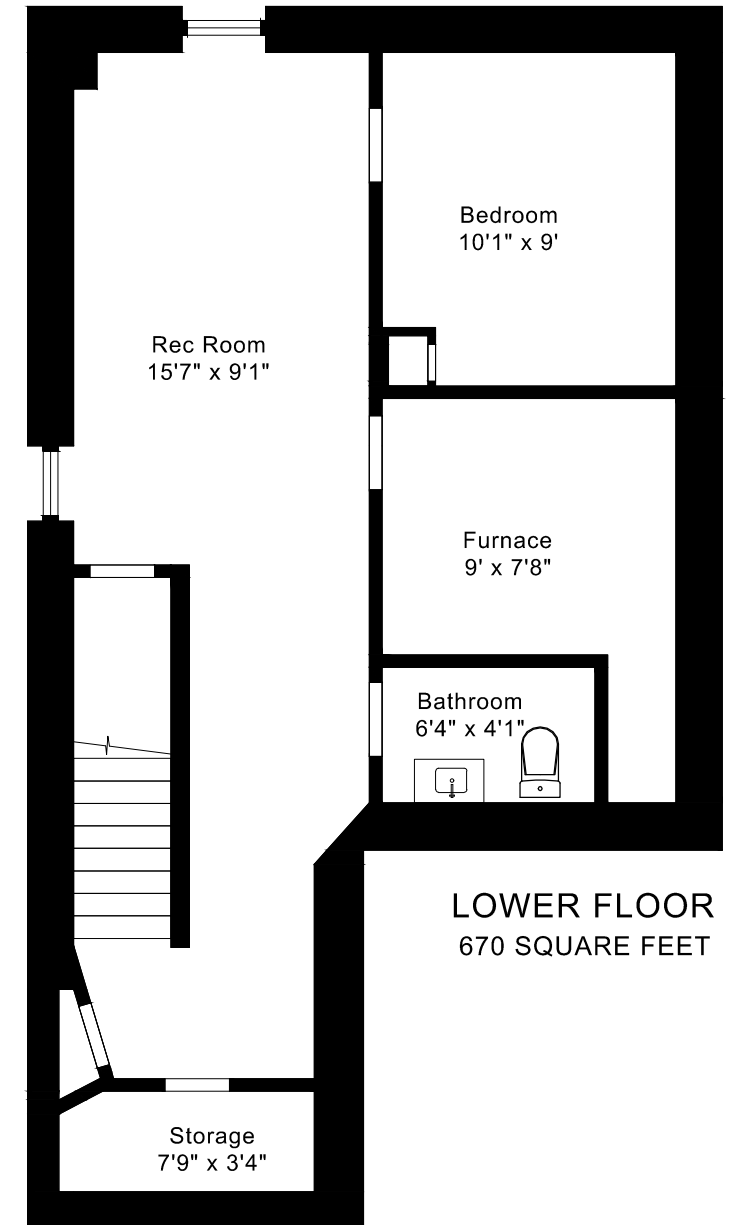
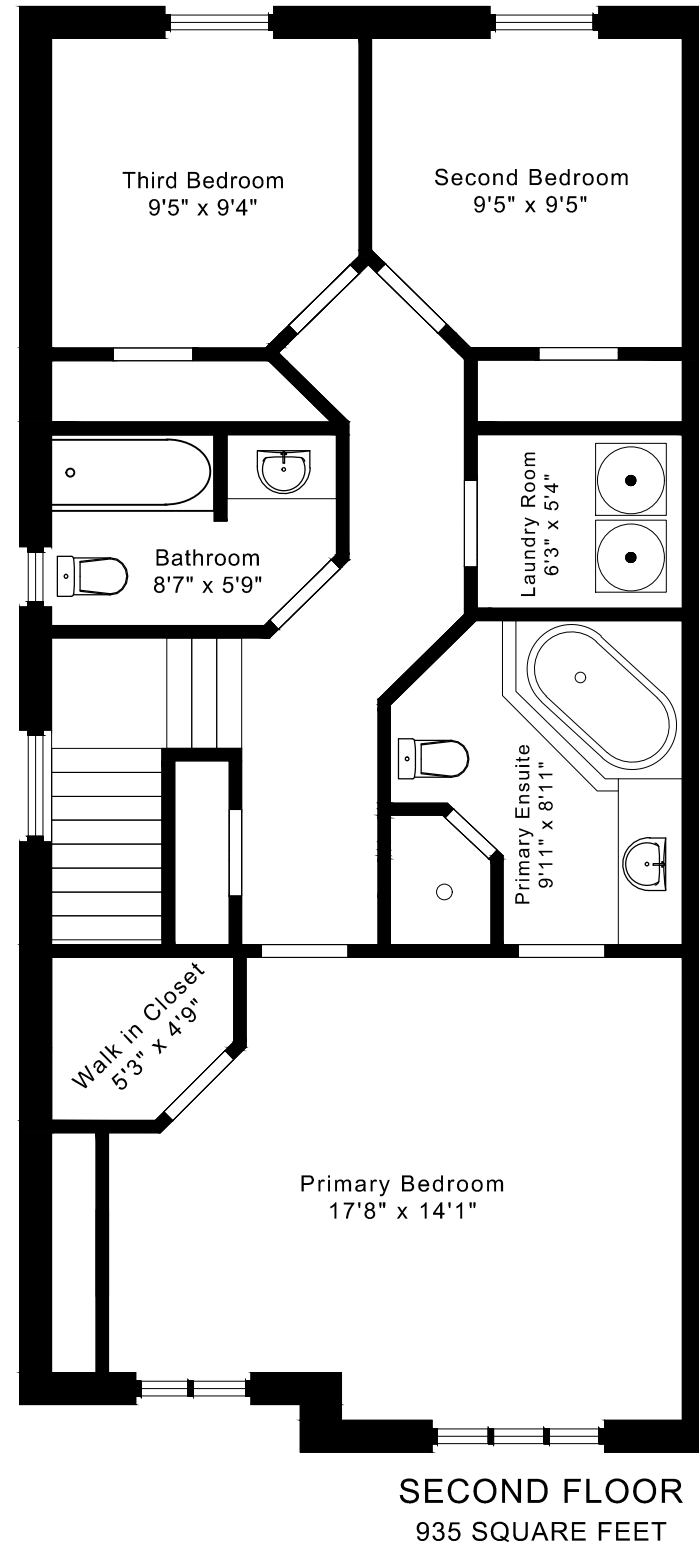
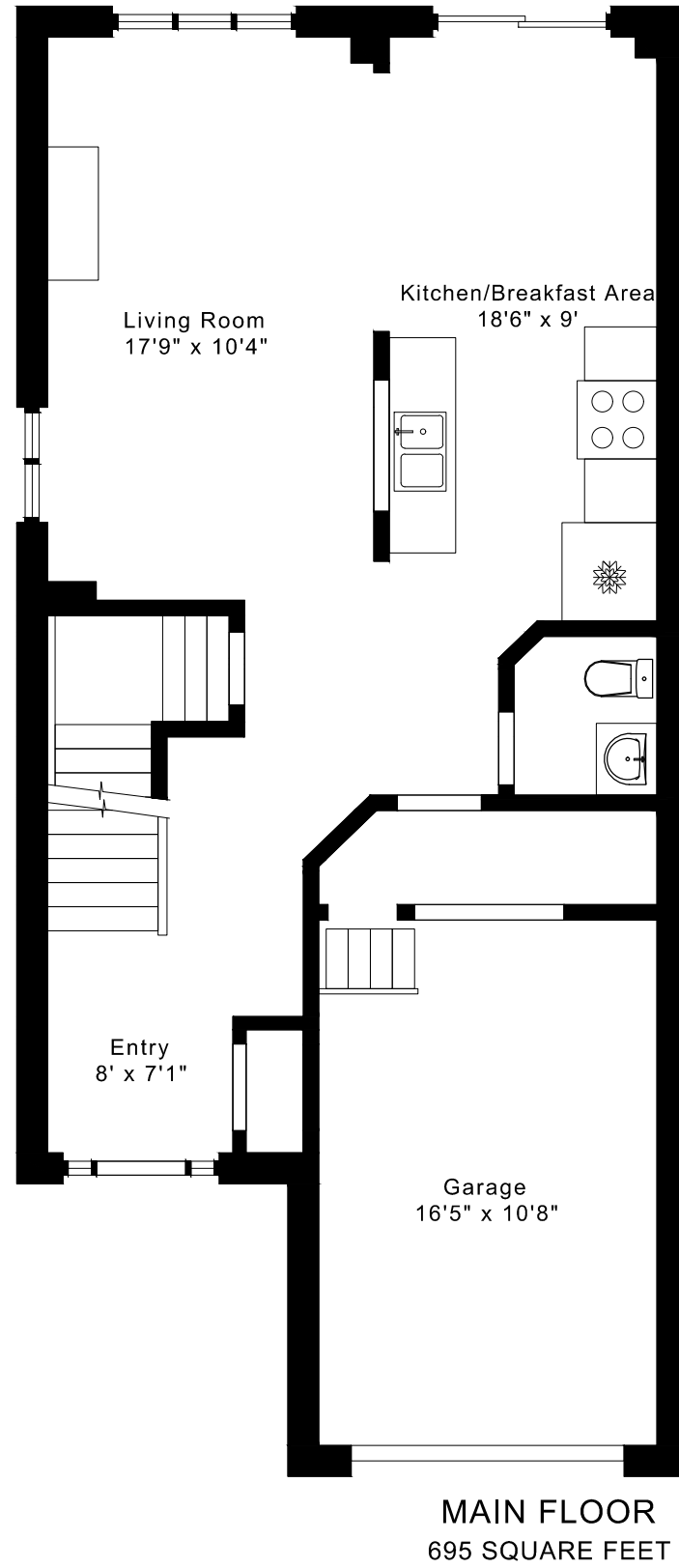


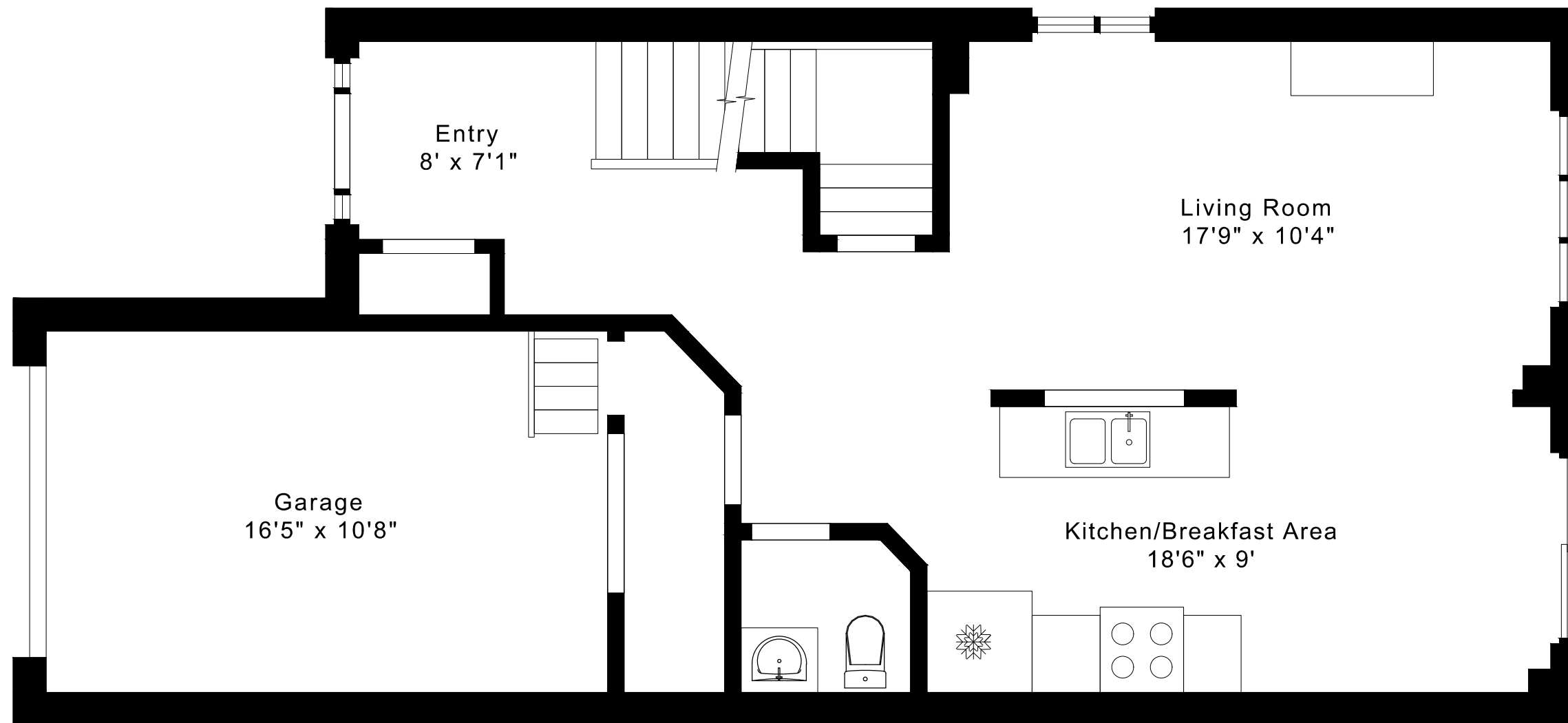
352 MILLER PARK AVENUE FLOOR PLANS



1630 sq ft + 670 sq ft
BELOW GRADE

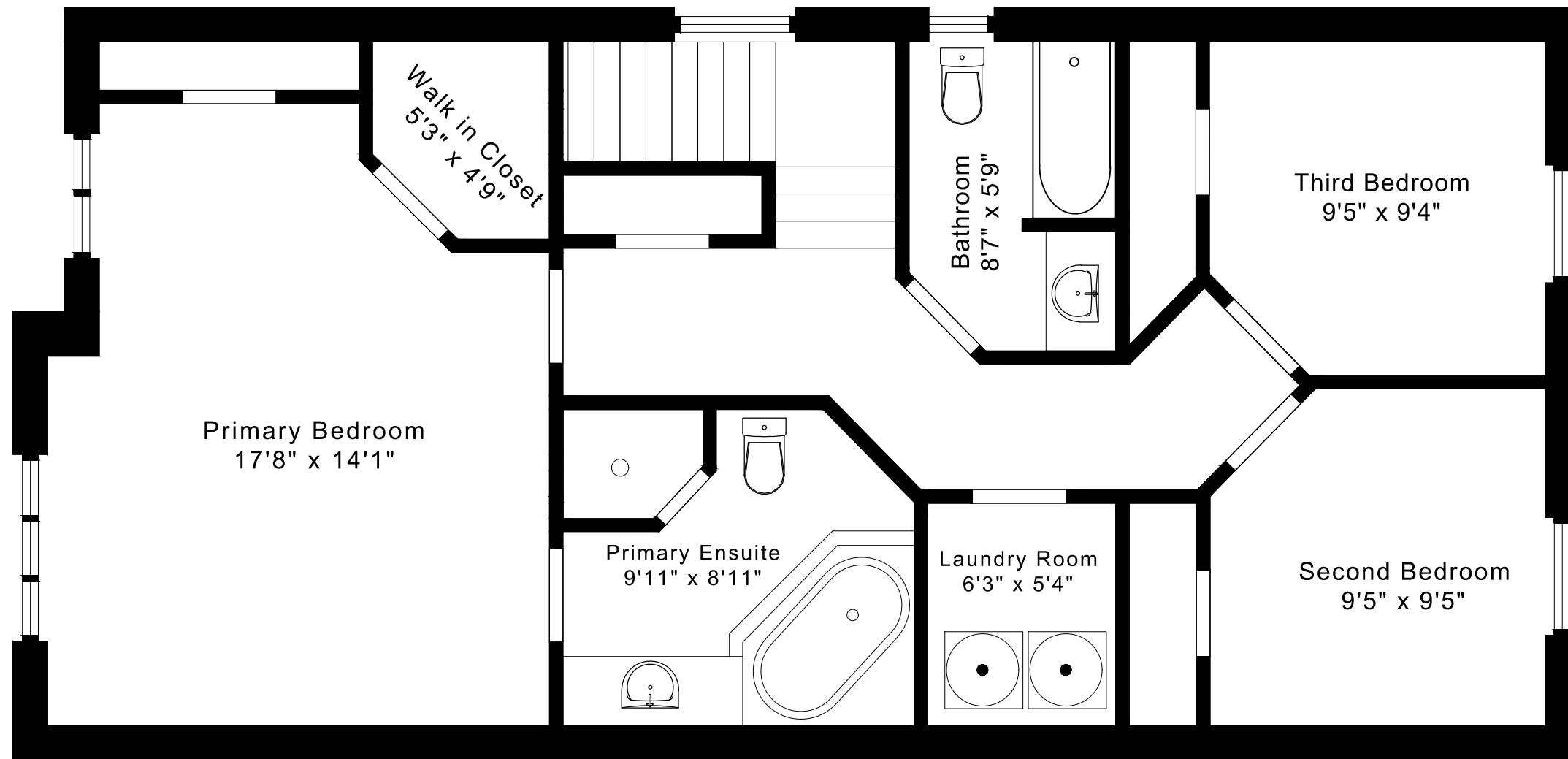
352 MILLER PARK AVENUE FLOOR PLANS

MAIN FLOOR 695 SQUARE FEET



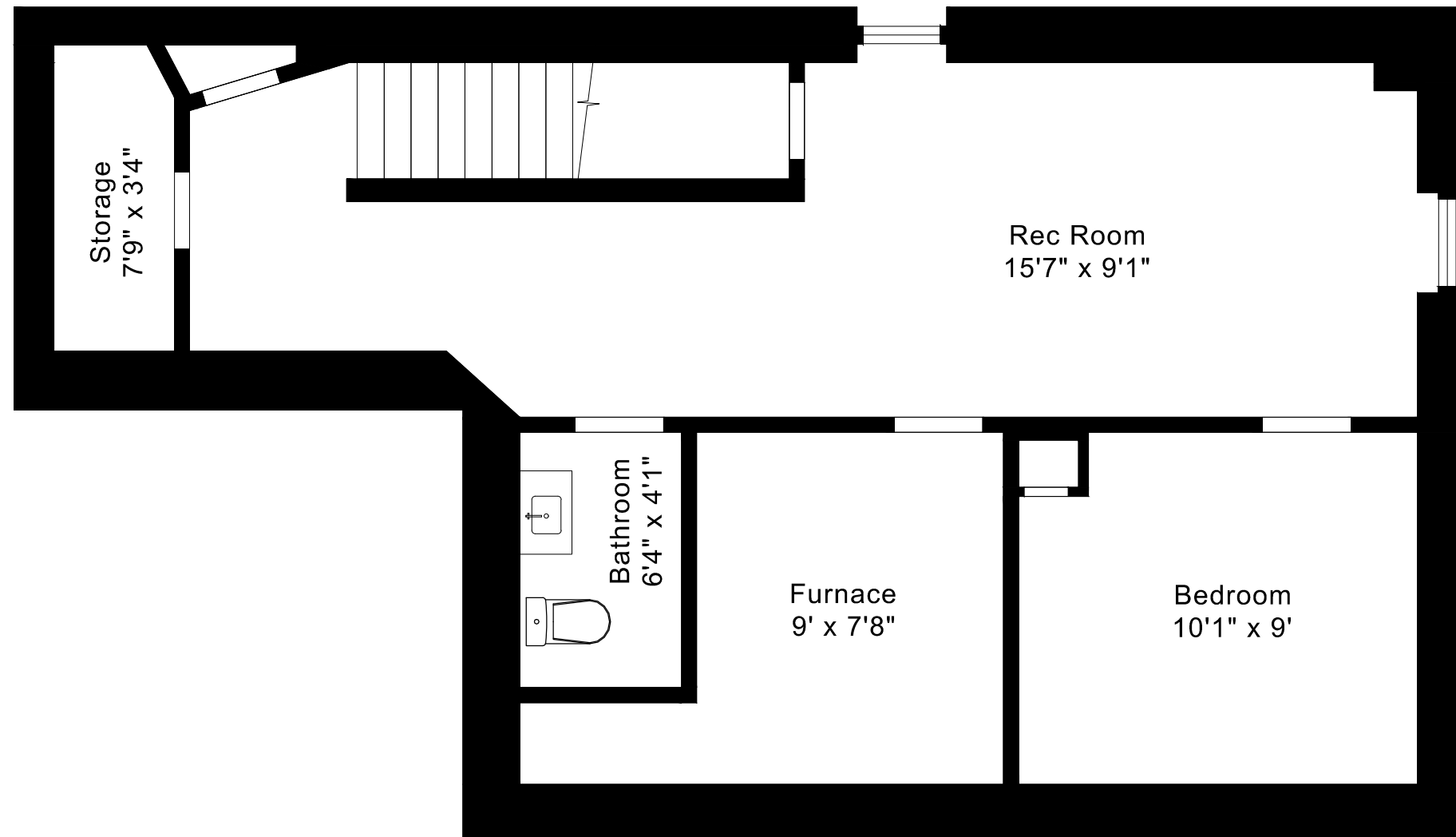
352 MILLER PARK AVENUE FLOOR PLANS

SECOND FLOOR 935 SQUARE FEET



352 MILLER PARK AVENUE FLOOR PLANS

LOWER FLOOR 670 SQUARE FEET



352 MILLER PARK AVENUE ROOM MEASUREMENTS

Floor	Room	Imperial						Metric [m]		
		Length		Width		Height		Length	Width	Height
		Feet	Inches	Feet	Inches	Feet	Inches			
Second	Primary Bedroom	17	8	14	1	8	1	5,38	4,29	2,46
	Primary Ensuite	9	11	8	11	8	1	3,02	2,72	2,46
	Walk in Closet	5	3	4	9	8	1	1,60	1,45	2,46
	Second Bedroom	9	9	9	5	8	1	2,97	2,87	2,46
	Third Bedroom	9	9	9	4	8	1	2,97	2,84	2,46
	Laundry Room	6	3	5	4	8	1	1,91	1,63	2,46
	Bathroom	8	7	5	9	8	1	2,62	1,75	2,46
Main	Entry	8	0	7	1	8	1	2,44	2,16	2,46
	Living Room	17	9	10	4	8	1	5,41	3,15	2,46
	Kitchen/Breakfast Area	18	6	9	0	8	1	5,64	2,74	2,46
	Garage	16	5	10	8	10	2	5,00	3,25	3,10
Lower	Rec Room	15	7	9	1	7	6	4,75	2,77	2,29
	Bedroom	10	1	9	0	7	6	3,07	2,74	2,29
	Furnace	9	0	7	8	7	6	2,74	2,34	2,29
	Storage	7	9	3	4	7	6	2,36	1,02	2,29
	Bathroom	6	4	4	1	7	6	1,93	1,24	2,29

CAPTURED ON: 19 MAY 2026
 DIMENSIONS ARE APPROXIMATE AND SHOULD BE CONSIDERED
 ILLUSTRATIVE ONLY.

1630 sq ft + 670 sq ft
 BELOW GRADE

The following is a disclaimer regarding the approximate nature of dimensions and floor areas listed in this document:

Disclaimer:

The dimensions and floor areas listed in this document are provided as an estimate only and are intended to be used for illustration purposes only. These measurements are not necessarily meant to be a perfect representation of the actual space.

Notes regarding measurement methods and accuracy:

The utilization of laser measurement technology during the 3D model capturing process at the location provides an accurate representation of floor plans, with a typical margin of error of 3-5%. For the most accurate and official measurement data, it is advised to consult official documents such as MPAC records, builder's pre-construction plans, or data from certified measurement companies.

Exterior wall thickness is included in the calculation of the overall square footage and is considered as a component of the footprint. The wall thickness measurement is obtained onsite whenever possible, or estimated in the event where obtaining onsite measurements is not possible, such as in the case of condominium buildings where wall thickness may vary throughout the building.