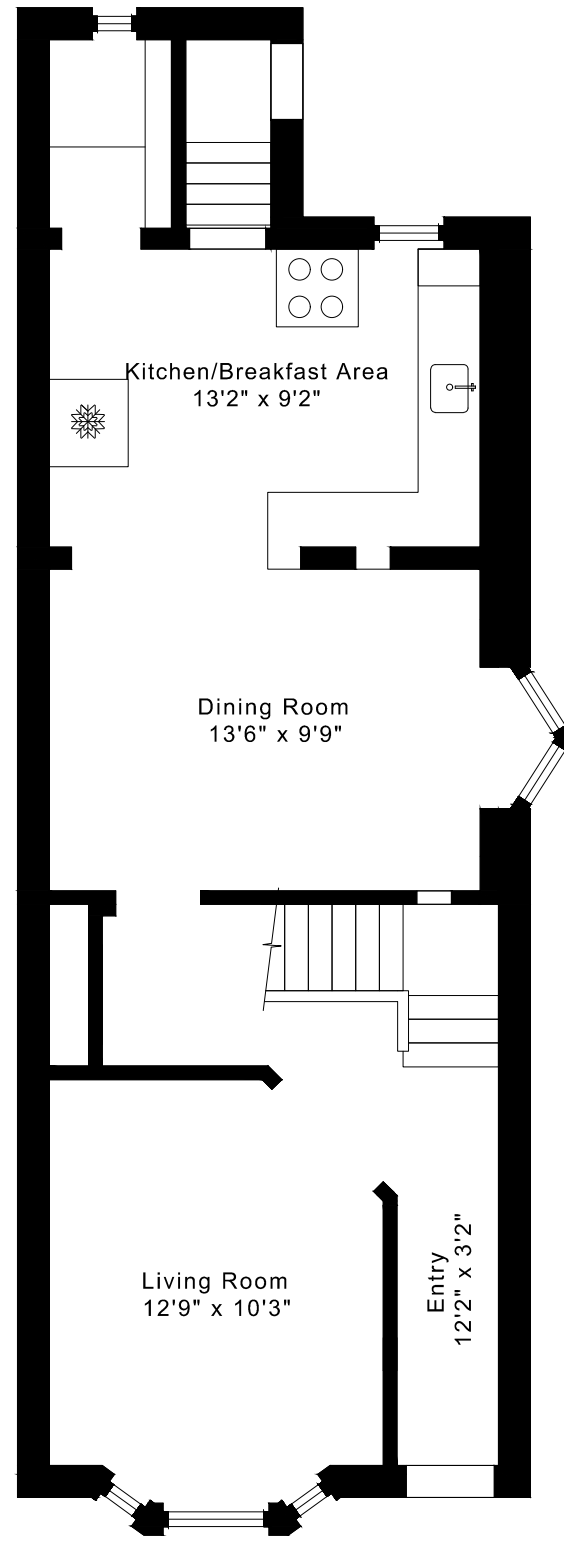
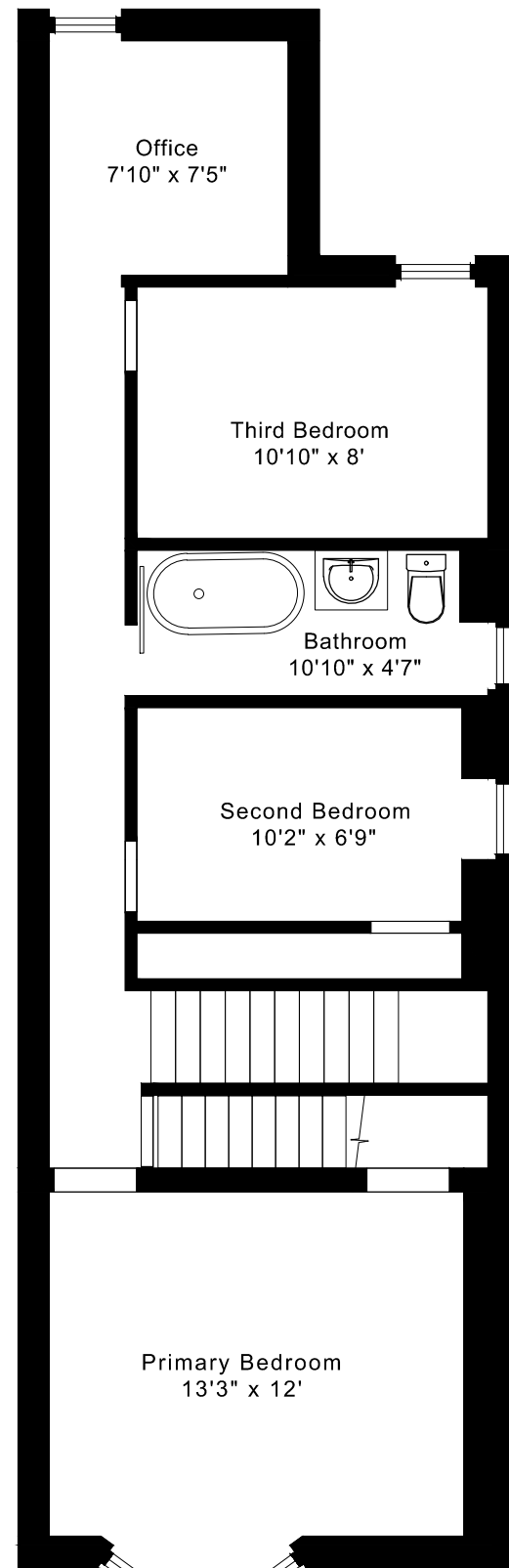


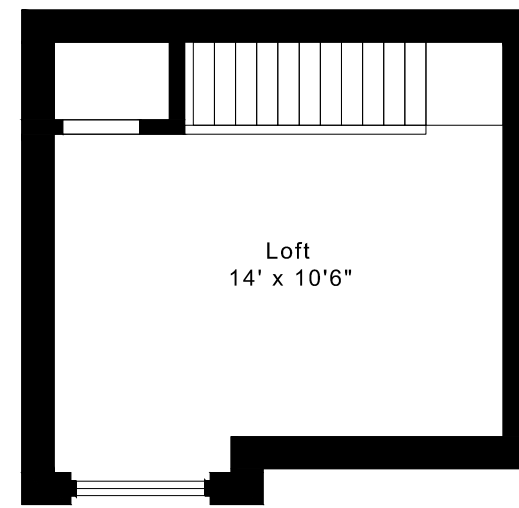
# 49 RAVINA CRESCENT FLOOR PLANS



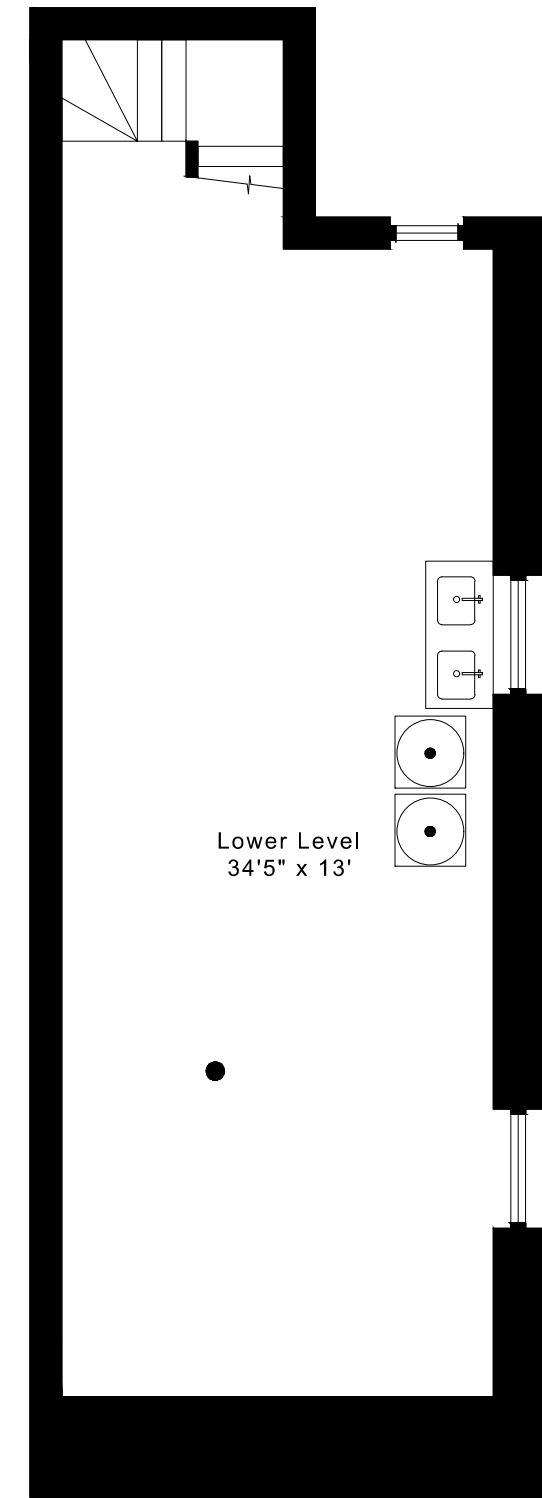
**MAIN FLOOR**  
680 SQUARE FEET



**SECOND FLOOR**  
725 SQUARE FEET



**THIRD FLOOR**  
230 SQUARE FEET

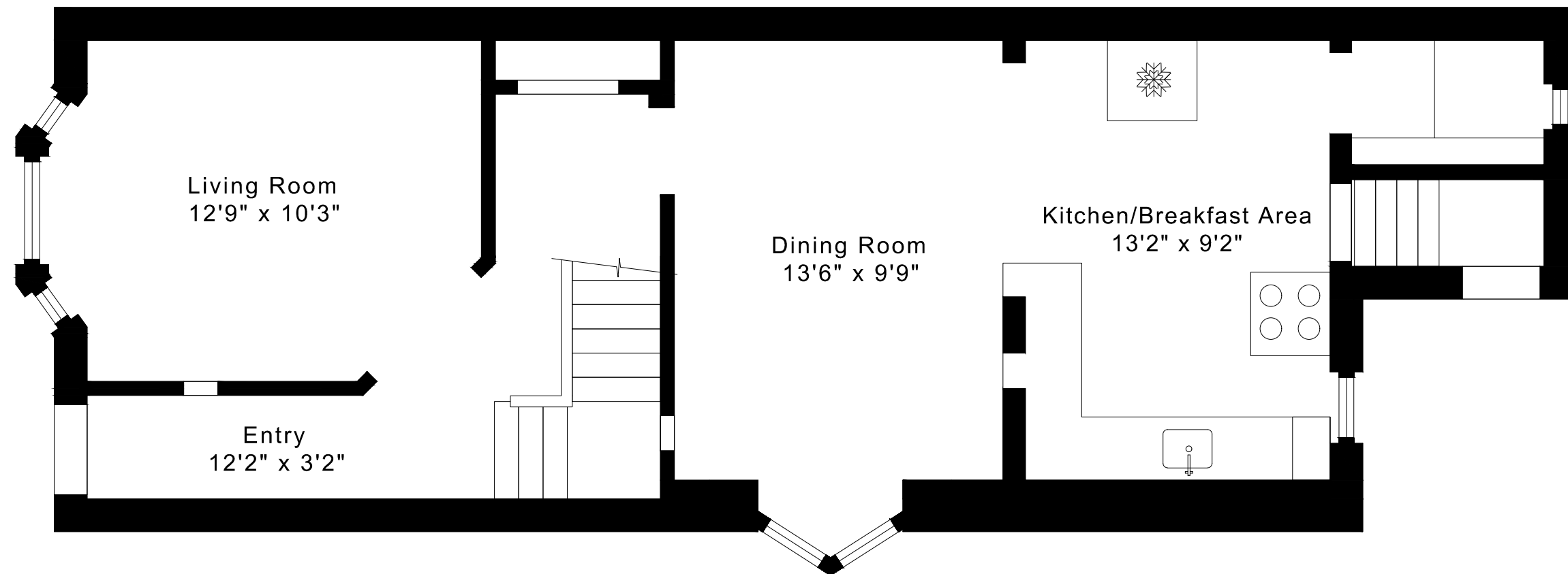


**LOWER FLOOR**  
675 SQUARE FEET

1635 sq ft + 675 sq ft  
BELOW GRADE

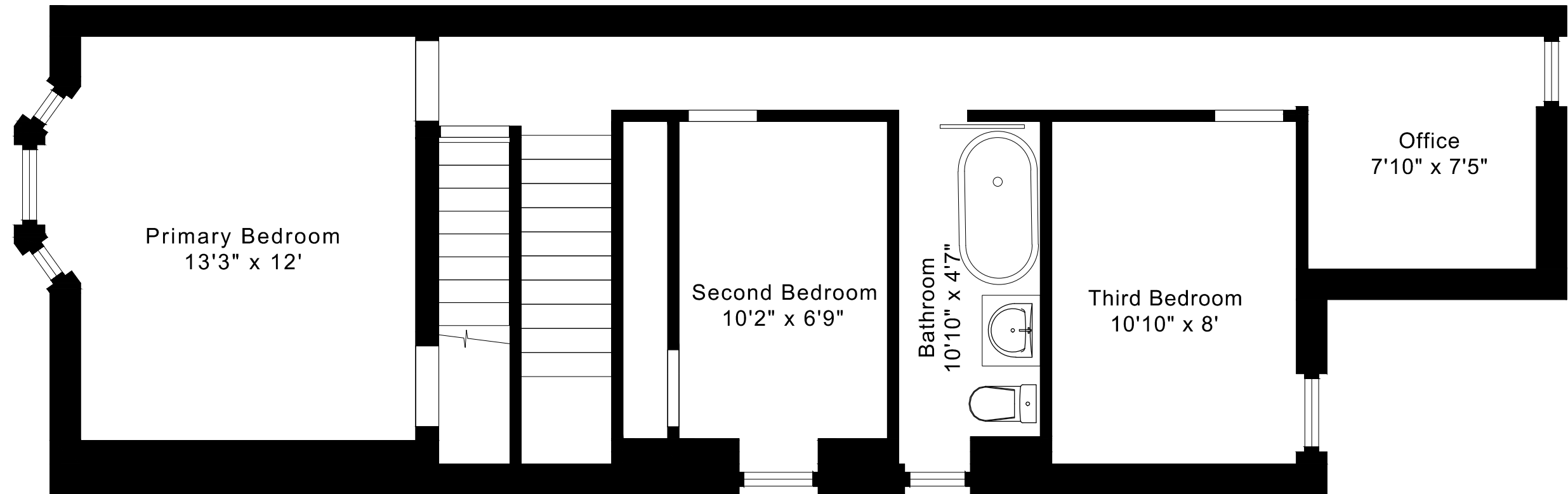
# 49 RAVINA CRESCENT FLOOR PLANS

MAIN FLOOR 680 SQUARE FEET



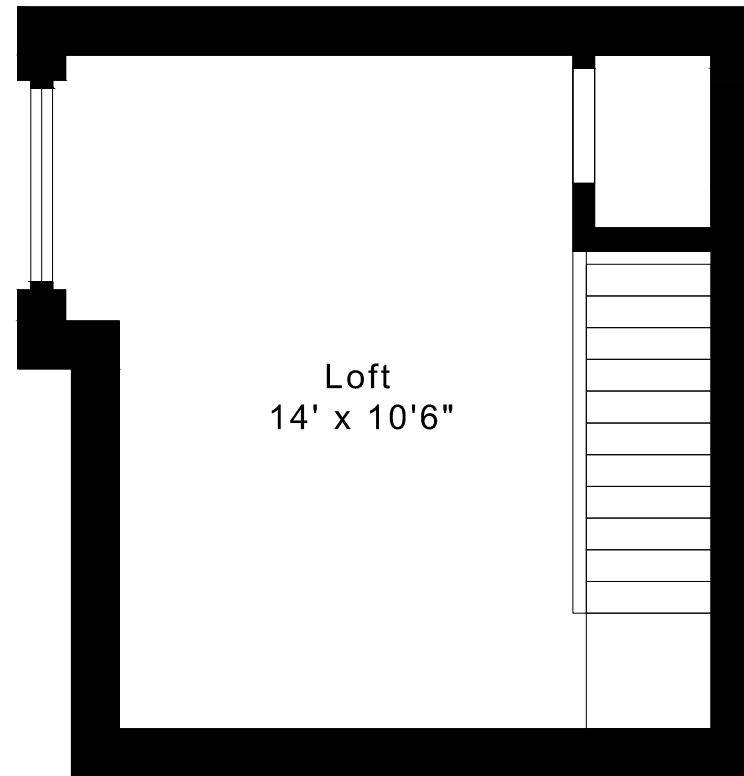
# 49 RAVINA CRESCENT FLOOR PLANS

SECOND FLOOR 725 SQUARE FEET



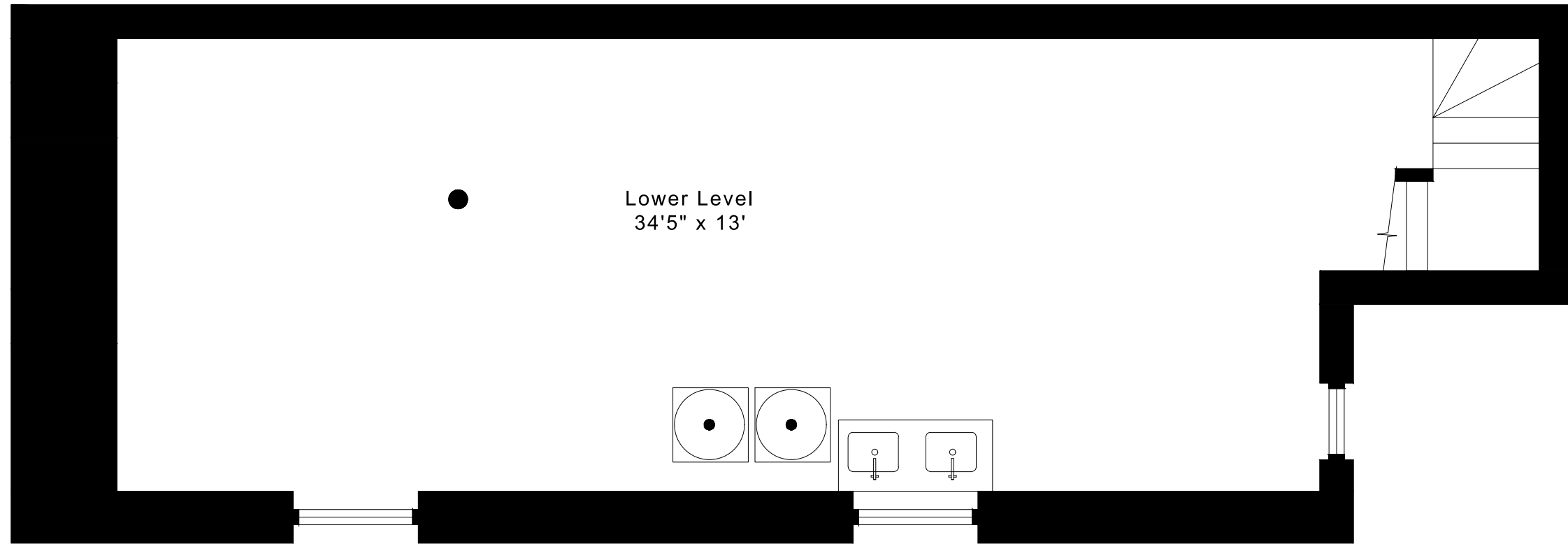
# 49 RAVINA CRESCENT FLOOR PLANS

THIRD FLOOR 230 SQUARE FEET



# 49 RAVINA CRESCENT FLOOR PLANS

LOWER FLOOR 675 SQUARE FEET



## 49 RAVINA CRESCENT ROOM MEASUREMENTS

Floor	Room	Imperial						Metric [m]		
		Length		Width		Height		Length	Width	Height
		Feet	Inches	Feet	Inches	Feet	Inches			
Third	Loft	14	0	10	6	8	5	4,27	3,20	2,57
Second	Primary Bedroom	13	3	12	0	8	11	4,04	3,66	2,72
	Second Bedroom	10	2	6	9	8	11	3,10	2,06	2,72
	Third Bedroom	10	10	8	0	8	11	3,30	2,44	2,72
	Office	7	10	7	5	8	11	2,39	2,26	2,72
	Bathroom	10	10	4	7	8	11	3,30	1,40	2,72
Main	Entry	12	2	3	2	9	2	3,71	0,97	2,79
	Living Room	12	9	10	3	9	2	3,89	3,12	2,79
	Dining Room	13	6	9	9	8	9	4,11	2,97	2,67
	Kitchen/Breakfast Area	13	2	9	2	8	9	4,01	2,79	2,67
Lower	Lower Level	34	5	13	0	6	5	10,49	3,96	1,96

CAPTURED ON: 17 MAY 2026  
 DIMENSIONS ARE APPROXIMATE AND SHOULD BE CONSIDERED  
 ILLUSTRATIVE ONLY.

1635 sq ft + 675 sq ft  
 BELOW GRADE

The following is a disclaimer regarding the approximate nature of dimensions and floor areas listed in this document:

---

**Disclaimer:**

The dimensions and floor areas listed in this document are provided as an estimate only and are intended to be used for illustration purposes only. These measurements are not necessarily meant to be a perfect representation of the actual space.

**Notes regarding measurement methods and accuracy:**

The utilization of laser measurement technology during the 3D model capturing process at the location provides an accurate representation of floor plans, with a typical margin of error of 3-5%. For the most accurate and official measurement data, it is advised to consult official documents such as MPAC records, builder's pre-construction plans, or data from certified measurement companies.

Exterior wall thickness is included in the calculation of the overall square footage and is considered as a component of the footprint. The wall thickness measurement is obtained onsite whenever possible, or estimated in the event where obtaining onsite measurements is not possible, such as in the case of condominium buildings where wall thickness may vary throughout the building.