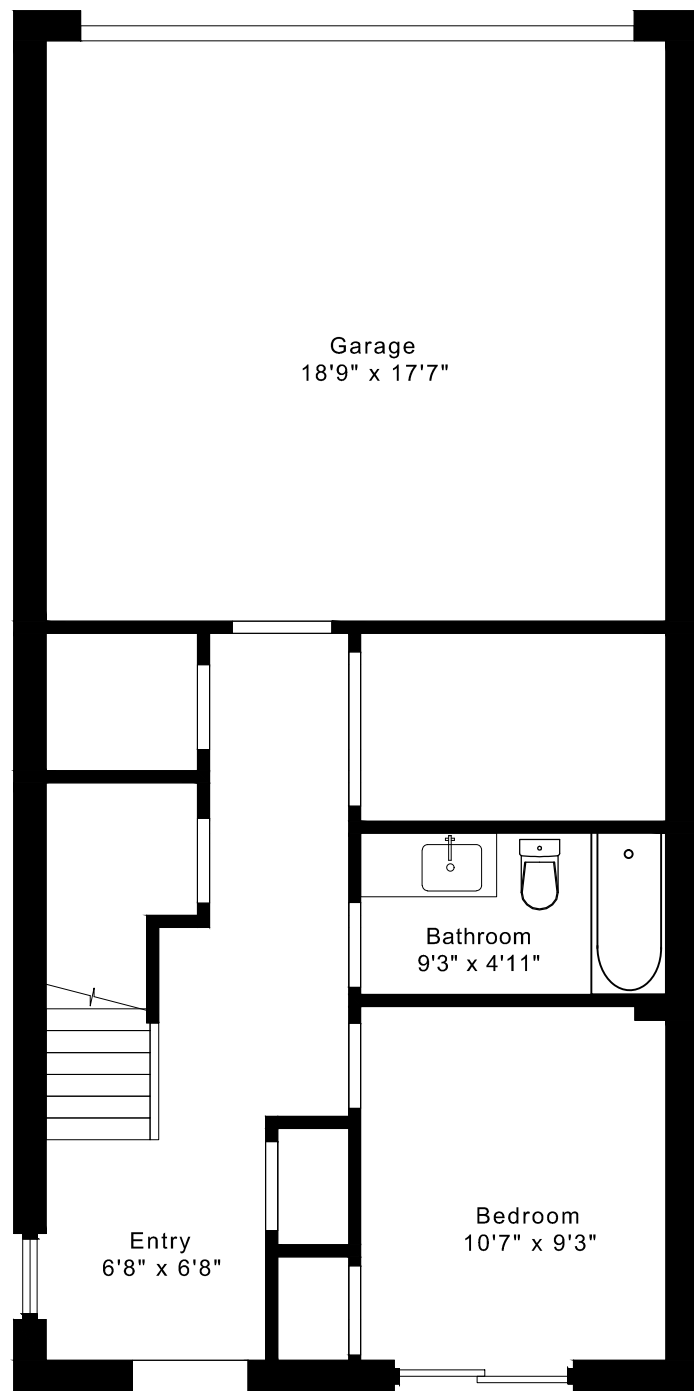
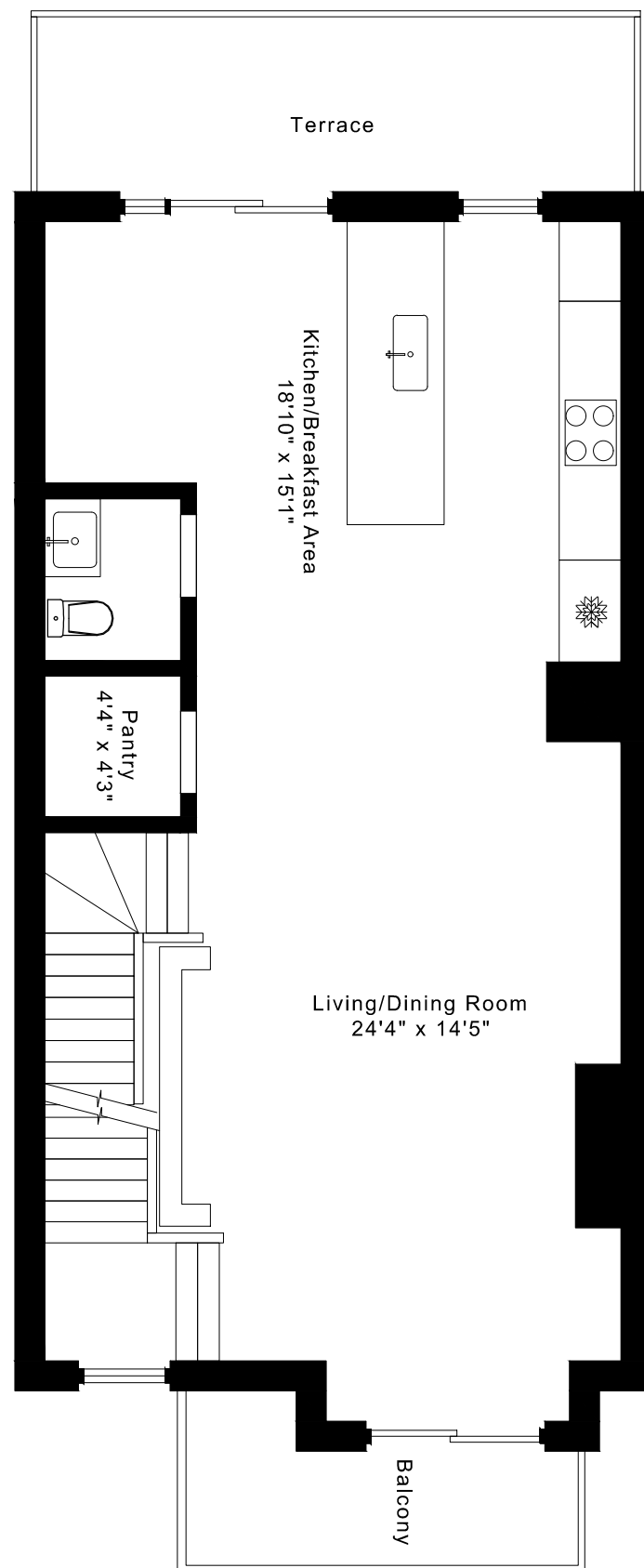


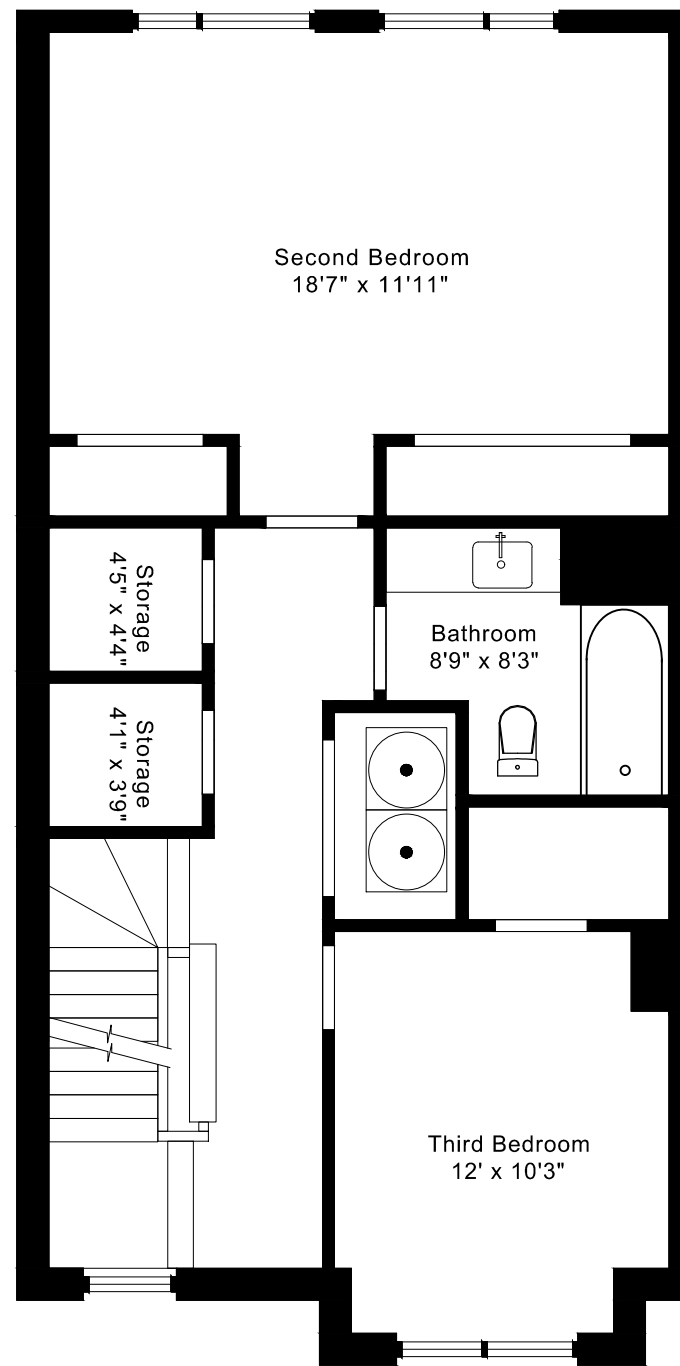
# 7 GODFREYS LANE FLOOR PLANS



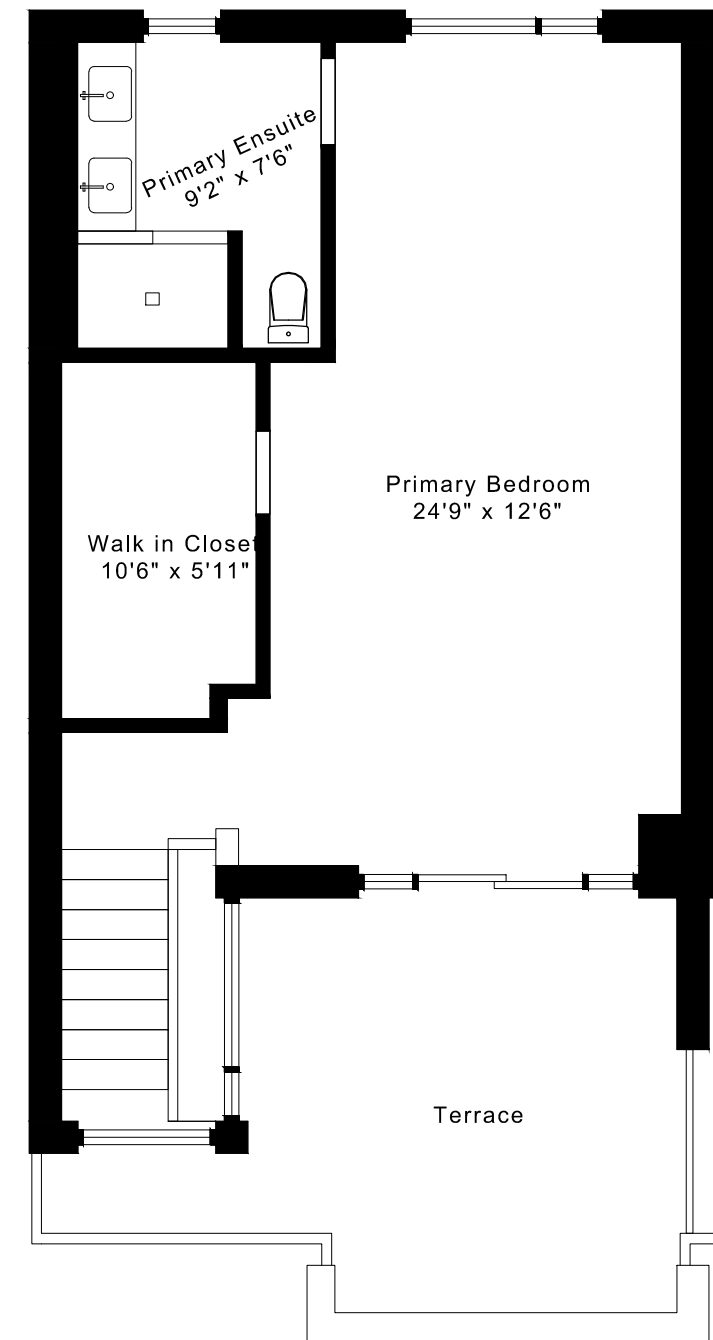
**MAIN FLOOR**  
495 SQUARE FEET



**SECOND FLOOR**  
850 SQUARE FEET



**THIRD**  
850 SQUARE FEET

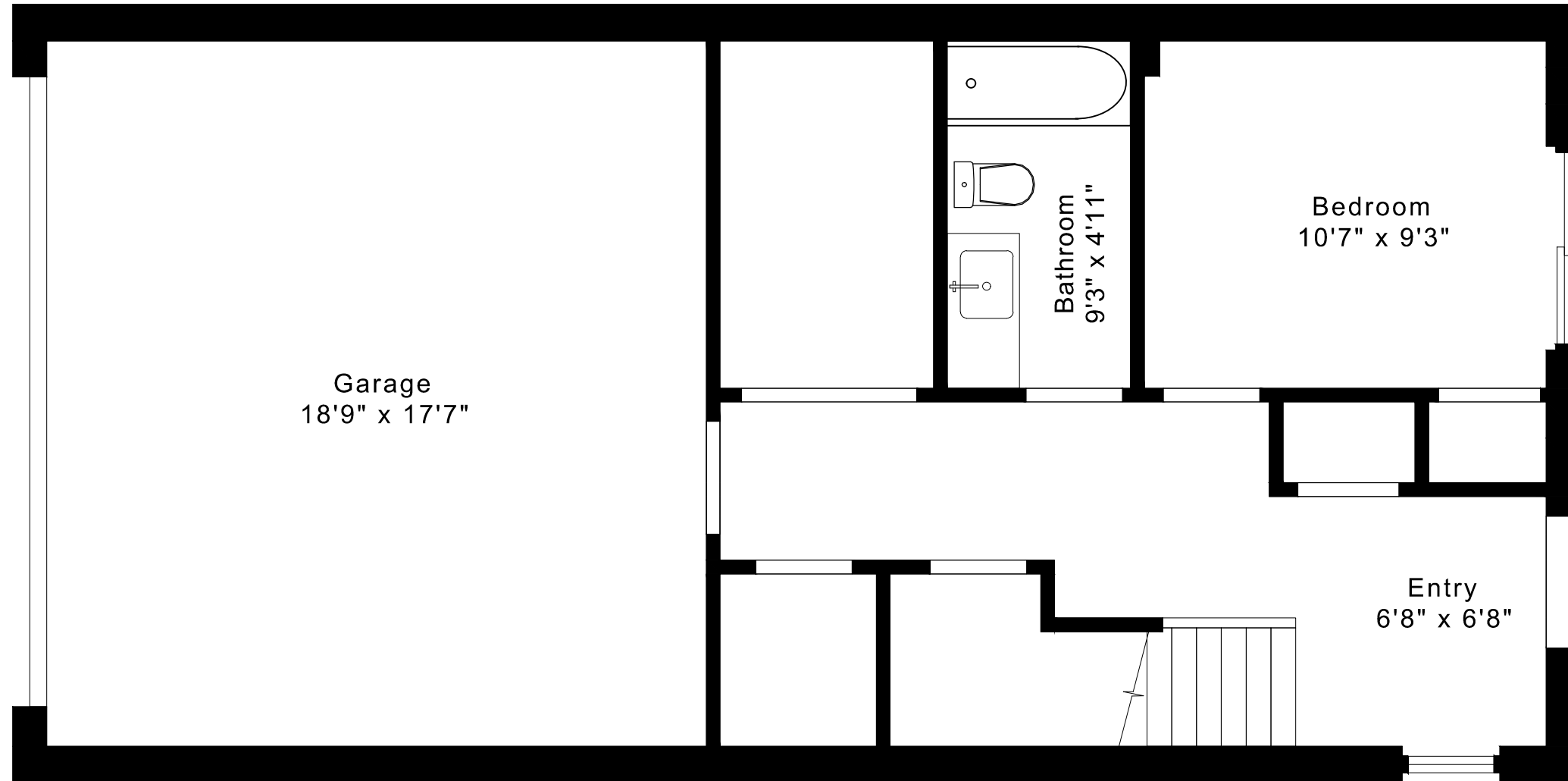


**FOURTH FLOOR**  
625 SQUARE FEET

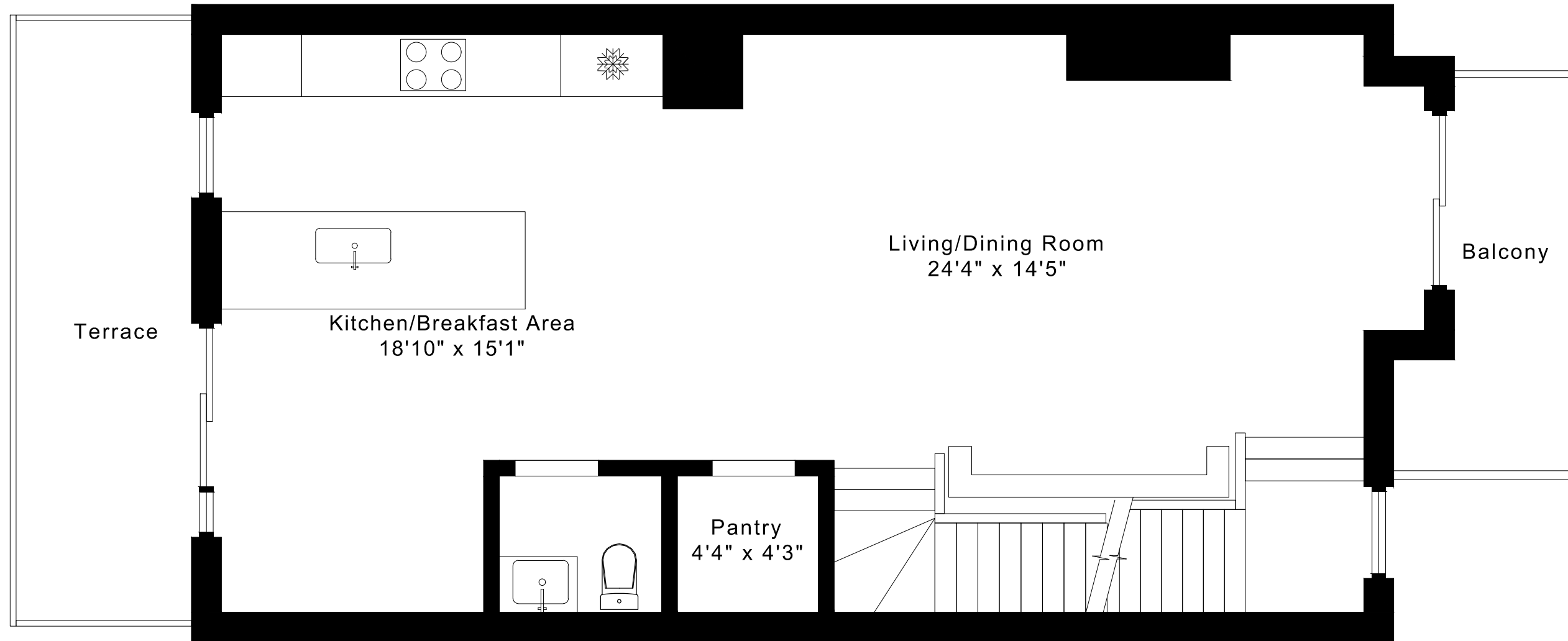
2820 sq ft

# 7 GODFREYS LANE FLOOR PLANS

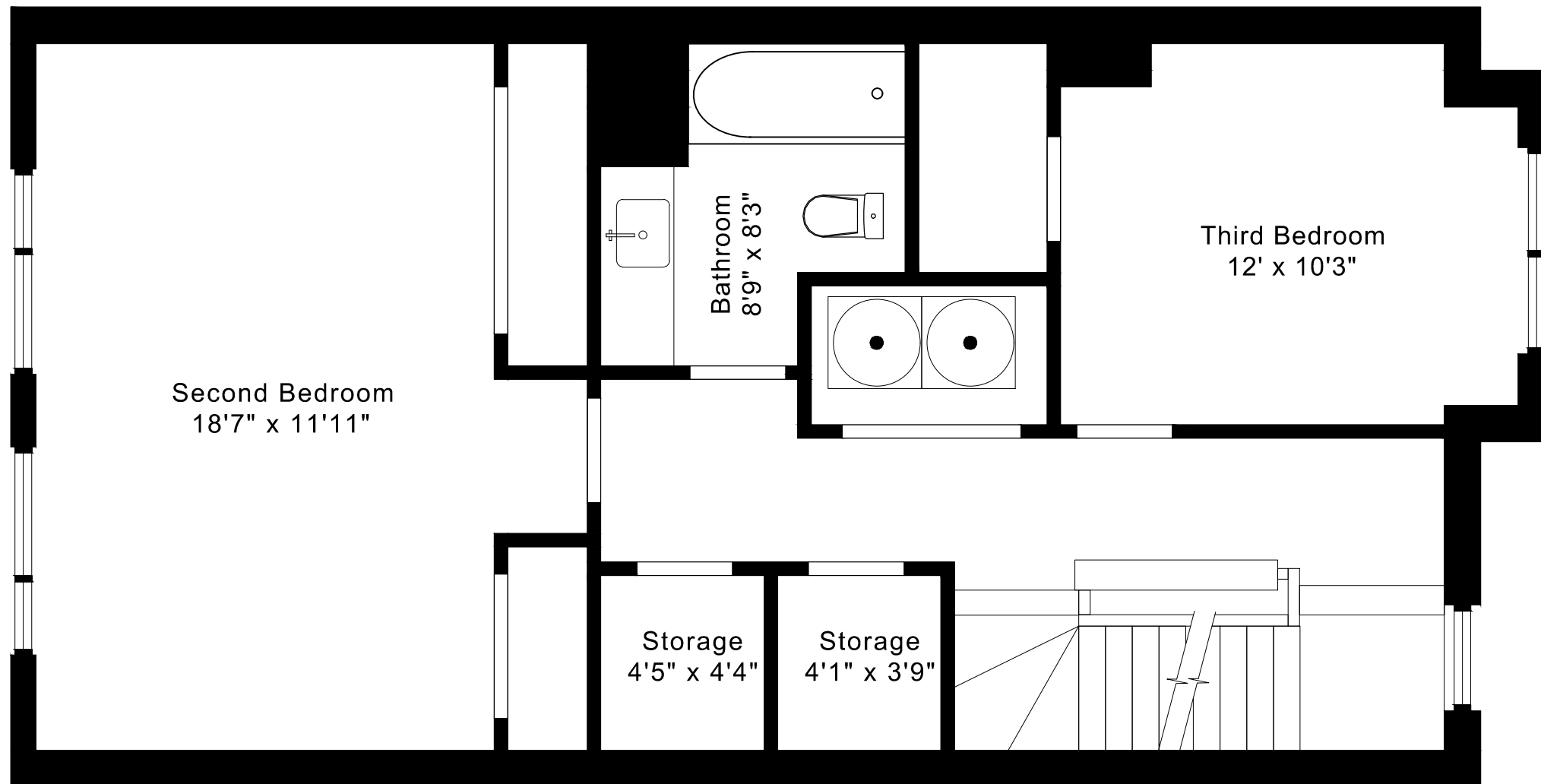
MAIN FLOOR 495 SQUARE FEET



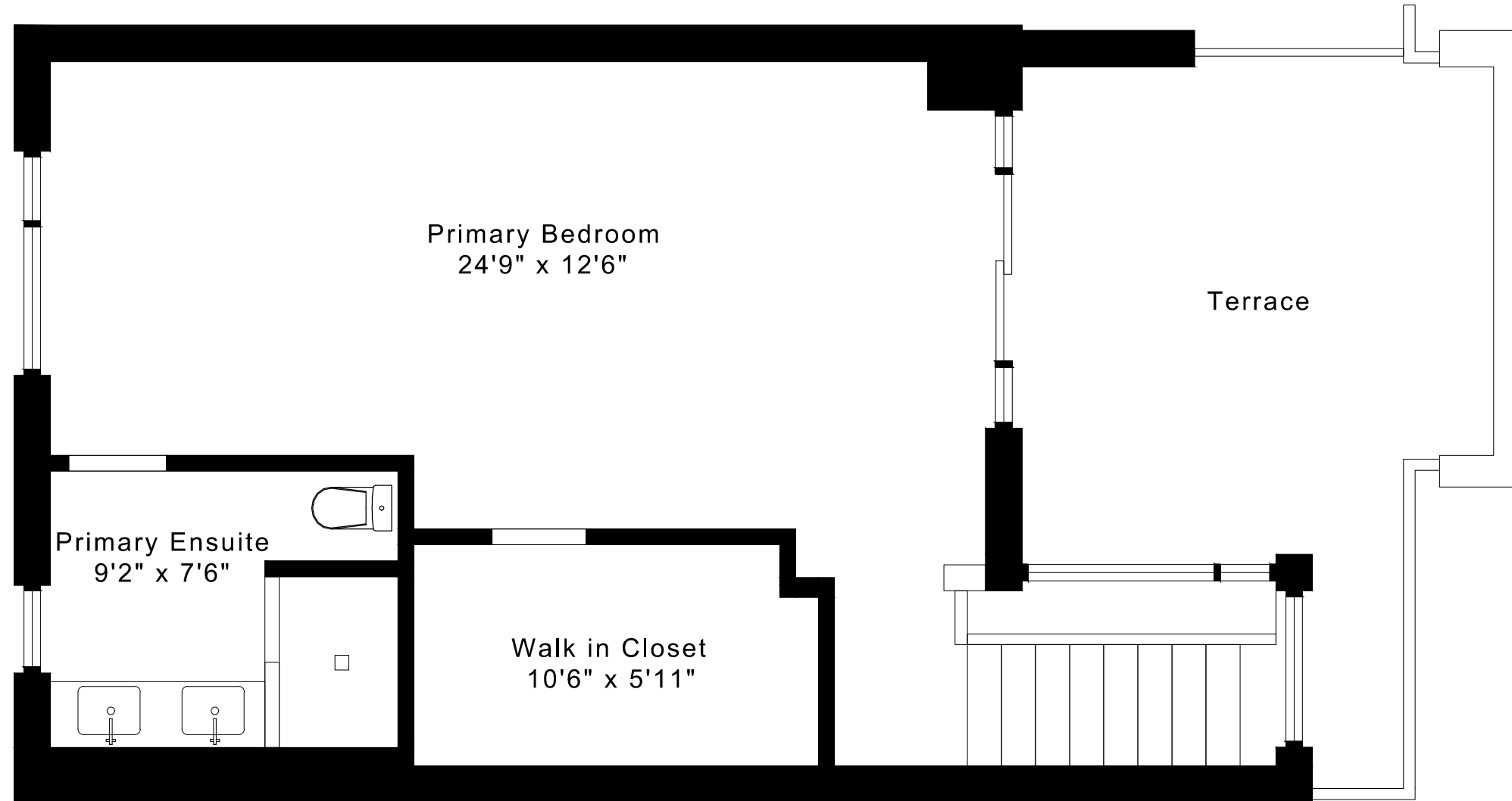
7 GODFREYS LANE  
FLOOR PLANS  
SECOND FLOOR 850 SQUARE FEET



7 GODFREYS LANE  
FLOOR PLANS  
THIRD FLOOR 850 SQUARE FEET



7 GODFREYS LANE  
FLOOR PLANS  
FOURTH FLOOR 625 SQUARE FEET



## 7 GODFREYS LANE ROOM MEASUREMENTS

Floor	Room	Imperial						Metric [m]		
		Length		Width		Height		Length	Width	Height
		Feet	Inches	Feet	Inches	Feet	Inches			
Fourth	Primary Bedroom	24	9	12	6	9	0	7,54	3,81	2,74
	Primary Ensuite	9	2	7	6	9	0	2,79	2,29	2,74
	Walk in Closet	10	6	5	11	8	0	3,20	1,80	2,44
Third	Second Bedroom	18	7	11	11	9	0	5,66	3,63	2,74
	Third Bedroom	12	0	10	3	9	0	3,66	3,12	2,74
	Bathroom	8	9	8	3	8	0	2,67	2,51	2,44
	Storage	4	1	3	9	9	0	1,24	1,14	2,74
	Storage	4	5	4	4	9	0	1,35	1,32	2,74
Second	Living/Dining Room	24	4	14	5	10	0	7,42	4,39	3,05
	Kitchen/Breakfast Area	18	10	15	1	10	0	5,74	4,60	3,05
	Pantry	4	4	4	3	10	0	1,32	1,30	3,05
Main	Entry	6	8	6	8	9	0	2,03	2,03	2,74
	Bedroom	10	7	9	3	9	0	3,23	2,82	2,74
	Bathroom	9	3	4	11	8	0	2,82	1,50	2,44
	Garage	18	9	17	7	9	0	5,72	5,36	2,74

The following is a disclaimer regarding the approximate nature of dimensions and floor areas listed in this document:

---

**Disclaimer:**

The dimensions and floor areas listed in this document are provided as an estimate only and are intended to be used for illustration purposes only. These measurements are not necessarily meant to be a perfect representation of the actual space.

**Notes regarding measurement methods and accuracy:**

The utilization of laser measurement technology during the 3D model capturing process at the location provides an accurate representation of floor plans, with a typical margin of error of 3-5%. For the most accurate and official measurement data, it is advised to consult official documents such as MPAC records, builder's pre-construction plans, or data from certified measurement companies.

Exterior wall thickness is included in the calculation of the overall square footage and is considered as a component of the footprint. The wall thickness measurement is obtained onsite whenever possible, or estimated in the event where obtaining onsite measurements is not possible, such as in the case of condominium buildings where wall thickness may vary throughout the building.